

Community Action Plan: Wrangell Community Survey Assessment 2019

Prepared for
Wrangell Cooperative Association



August 2019

by Rain Coast Data



Table of Contents

Introduction Page 1

Summary of Findings.....	Page 1
Survey Methodology.....	Page 2

Health Care Page 3

Health Care Related Needs.....	Page 3
Health Care Workforce Needs.....	Page 7
Health Care Procedures.....	Page 11
Health Care Specialists.....	Page 12
Transition to SEARHC.....	Page 13

Economic Development Page 14

Economic Development Initiatives.....	Page 14
---------------------------------------	---------

Tourism Page 18

Tourism Related Needs.....	Page 18
----------------------------	---------

Tribal IGAP Programming Page 22

Environmental Priorities/Concerns.....	Page 22
----------------------------------------	---------

General Citizen Feedback Page 26

Most Critical Need.....	Page 26
Other Feedback.....	Page 27

Participant Overview Page 28

Housing Page 29

Open Ended Responses Page 30

<i>Health care procedures outside of Wrangell.....</i>	Page 30
<i>Health care specialists desired in Wrangell.....</i>	Page 40
<i>Describe transition to SEARHC.....</i>	Page 50
<i>Most critical community need.....</i>	Page 62
<i>Additional input for WCA.....</i>	Page 76
<i>“Other please describe” responses.....</i>	Page 84
<i>Health care needs.....</i>	Page 84
<i>Health workforce.....</i>	Page 86
<i>Economic initiatives.....</i>	Page 87
<i>Tourism needs.....</i>	Page 90
<i>Environmental concerns.....</i>	Page 93

Summary of Findings

Based on a survey of nearly 500 residents during the summer of 2019, the greatest community need in Wrangell is infrastructure repair, especially for water-related infrastructure. Nearly all respondents (97%) say that repairing the community's aging infrastructure has a high or medium level of need. This survey is a component of the Comprehensive Action Plan being developed by the Wrangell Cooperative Association.

Health Care: Many long-standing health care concerns were mollified through the transition of health services from the city-owned Wrangell Medical Center to the Southeast Alaska Regional Health Consortium (SEARHC) in the fall of 2018. This change, widely praised in the survey, is expected to bring more improvements when SEARHC opens a new facility in 2021. However, unmet health care needs remain. There is an especially a high demand for more substance abuse and drug treatment services in the community, according to the survey. In terms of health care related workforce development, the community would like to see the reinstatement of a high school training program for certified nursing assistants. Wrangell residents would like more eye care specialists and OB-GYN capacity in the community. The community also wants more recreation opportunities for Wrangell's youth.

Economic Development: The top three economic development related needs in the community include 1) repairing aging infrastructure, 2) training high school students in the maritime trades, and 3) developing the Institute Property for housing and mixed-use neighborhoods. While nearly two-thirds of Wrangell residents (61%) say growing the tourism economy has a high or medium level of demand, it ranked at the bottom of the eight community economic development initiatives presented in the survey, with only a quarter of residents saying that tourism growth is *highly* needed.

Tourism: Among the 15 elements of the tourism industry presented to survey respondents, community members would most like to have more Alaska Native dancing and story telling for visitors. The second highest tourism related priority is the creation of Gateway Park, a proposed concept to move existing freight services from downtown Wrangell to the Old Mill site and create a park with small businesses in its place for visitors and locals. Wrangell residents have little interest in making the community into a destination for sports fishing or large cruise ship visitation.

Environment: The primary environmental concern in the community is securing continued access to safe drinking water, followed by taking additional measures to adequately address drought impacts in Wrangell.

Alaska Native versus Community as a Whole: The survey responses of all Wrangell residents and the responses of Alaska Native community members were very similar overall. Among the 60 sub-questions, only one (creation of a traditional foods program) garnered significantly different answers.

Survey Methodology

The Wrangell Cooperative Association (WCA) is working to create a coordinated Comprehensive Action Plan to address prioritized community needs, stop outmigration, and increase Tribal Citizen return to Wrangell. As part of this process, the WCA collected community-specific information regarding economic development, healthcare and long-range housing needs. The Wrangell Cooperative Association contracted with a team that included Corvus Design, Rain Coast Data, and Salt to conduct a tribal community needs assessment in Wrangell.

On June 12-13th, 2019 WCA hosted a series of health care and economic development planning sessions to discuss priorities and establish a strategies. Nearly 75 Wrangell residents attended these Nolan Center events. Community members were asked to identify the initiatives that would bring the most value to Wrangell. This process, coupled with community research, analysis and stakeholder interviews, was used to develop the survey instrument. The survey findings presented in this report will drive the content and direction of the Comprehensive Action Plan.

Rain Coast Data designed the survey on behalf Wrangell Cooperative Association. The web-based survey was administered electronically from June 21st through July 19th, 2019. The survey asked Wrangell residents to respond to 16 questions and 60 sub-questions about their community preferences and priorities, specifically in the areas of health care, tourism, economic development, and environmental considerations. The survey was available electronically or by paper copy. Prizes, including Alaska Airline miles, free groceries, and an iPad were provided as a survey incentive.

A total of 482 people in Wrangell took the survey. It was open to all community members over the age of 10. There are 2,137 residents over the age of 10 in Wrangell. This means 23% of community members in this demographic participated in the process, for a survey confidence level of 95% with a margin of error of 3.9%. Just over one-third (35%) of all survey respondents are Alaska Native.

SURVEY PARTICIPATION

TOTAL SURVEYS = 482

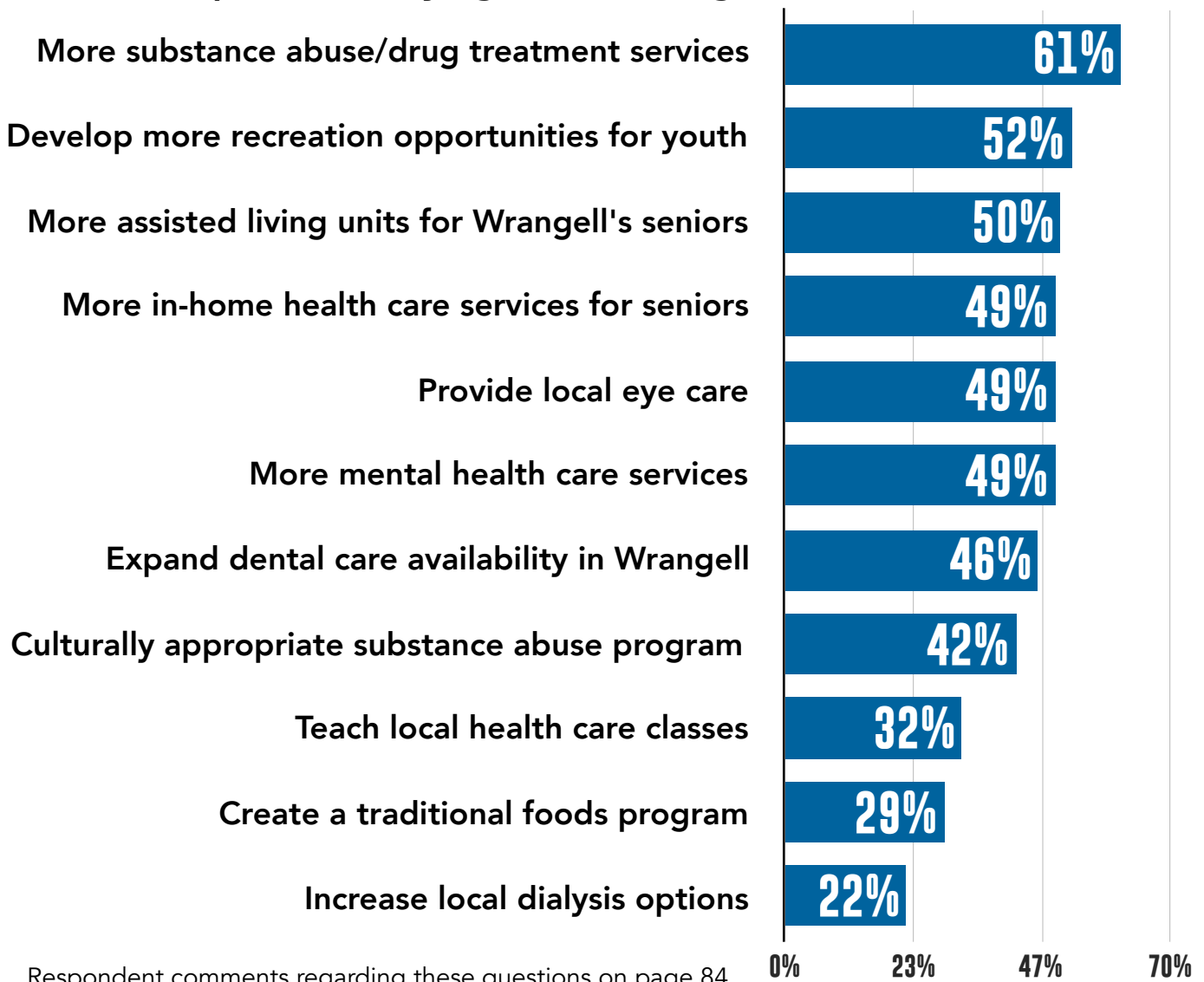
In April of 2019, a housing survey was developed for the WCA by the Tlingit and Haida Regional Housing Authority. That survey was developed and fielded by the same team. These two surveys will be used together as the basis to develop the community priorities of the Comprehensive Action Plan.

Health Care

How Important are the Following Health Care Related Needs in Wrangell?

The health care needs with the highest demand in the community of Wrangell, according to the survey, include drug and substance abuse treatment, opportunities for Wrangell's youth to be more active, and development of assisted living. Of the 11 priorities identified by the community, increased dialysis was rated as having the lowest level of current demand.

Respondents saying this has a high level of demand or need



Respondent comments regarding these questions on page 84.

How Important are the Following **Health Care Related Needs** in Wrangell?

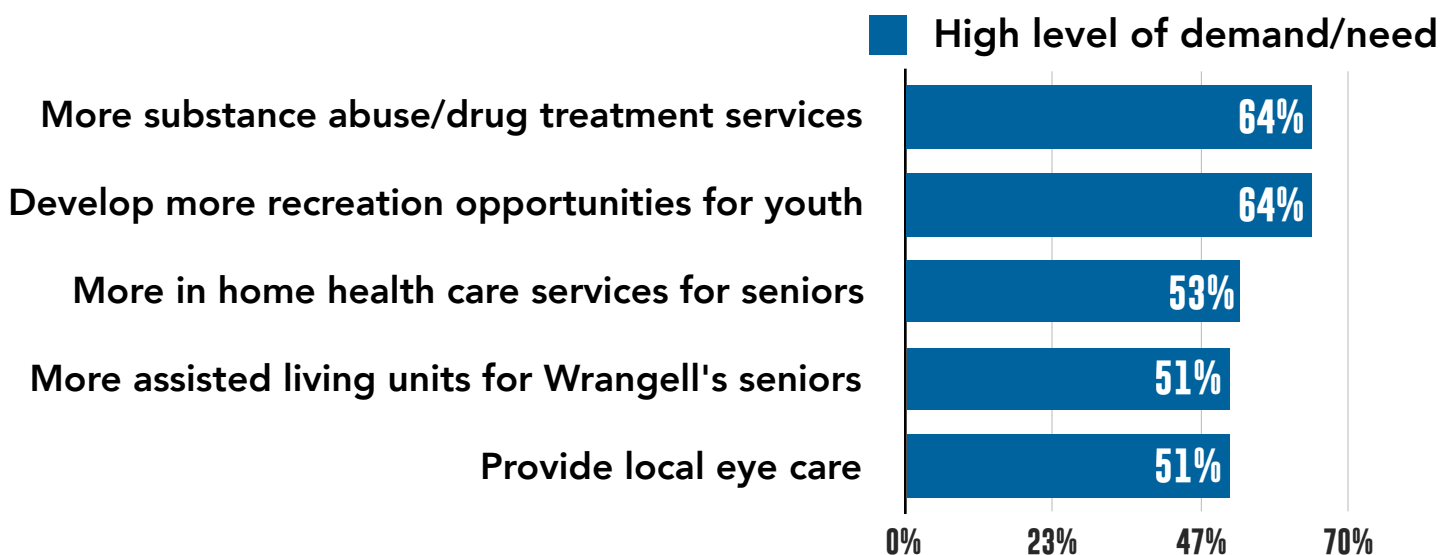
The table below breaks out all survey responses to this question. While the response most likely to be categorized as having a “high level of demand or need” is more substance abuse treatment, it is the next category “Develop more recreation opportunities for youth” that has the highest combined high level and medium level of need percentage (90%). Dialysis had the lowest level of those saying it is a “high need” but also the highest percentage of people who say that they are unsure of the overall level of need.

Answer Options	High level demand/ need	Medium level demand/ need	Low level demand/ need	No need or demand at this time	Unsure
More substance abuse/ drug treatment services	61%	27%	6%	2%	4%
Develop more recreation opportunities for youth	52%	38%	7%	2%	1%
More assisted living units for Wrangell's seniors	50%	34%	5%	2%	9%
More in home health care services for seniors	49%	35%	4%	1%	10%
Provide local eye care	49%	37%	10%	1%	3%
More mental health care services	49%	36%	9%	2%	5%
Expand dental care availability in Wrangell	46%	38%	10%	3%	2%
Develop a culturally appropriate, nature-based substance abuse program (for adults)	42%	36%	11%	4%	8%
Teach local health care classes	32%	45%	17%	3%	4%
Create a traditional foods program	29%	38%	20%	5%	7%
Increase local dialysis options	22%	33%	16%	2%	28%

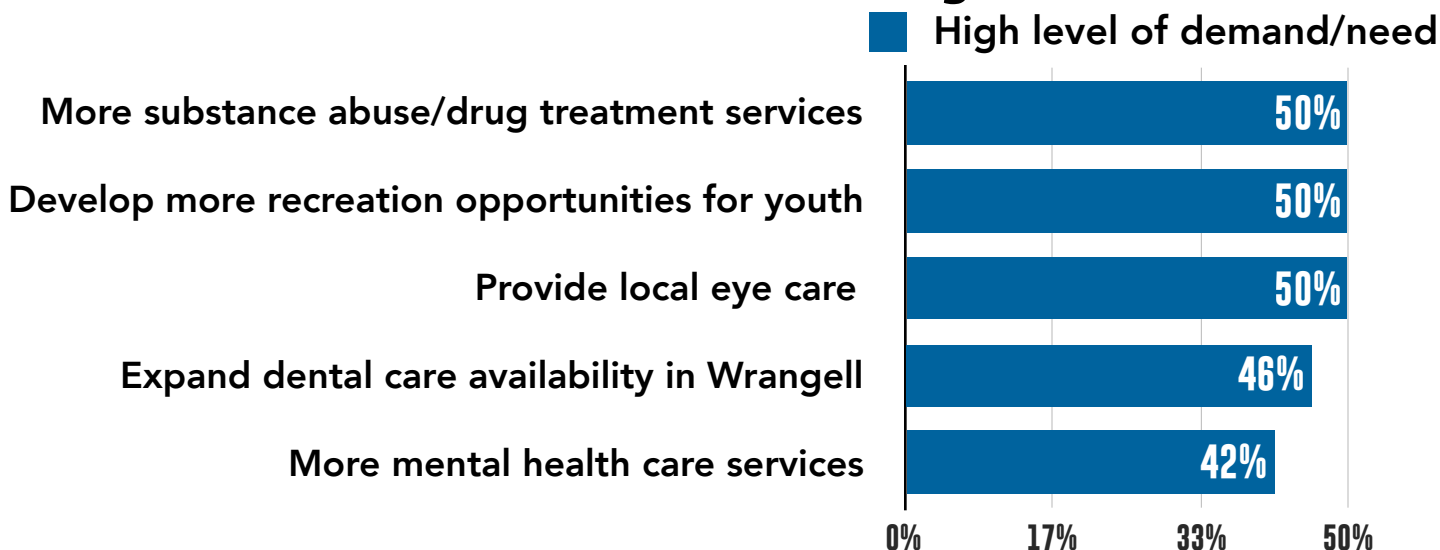
How Important are the Following **Health Care Related Needs** in Wrangell?

When these priorities were broken out by the sub-demographics of Alaska Native only and those between the ages of 10 and 18, the top two priorities for health did not change.

Alaska Native Only



Youth Only



How Important are the Following **Health Care Related Needs** in Wrangell?

The following table reviews the responses of all Wrangell Alaska Native survey participants to this question. Generally the responses were very similar to the community as a whole, although there is significantly more support for a traditional foods program among Alaska Native respondents.

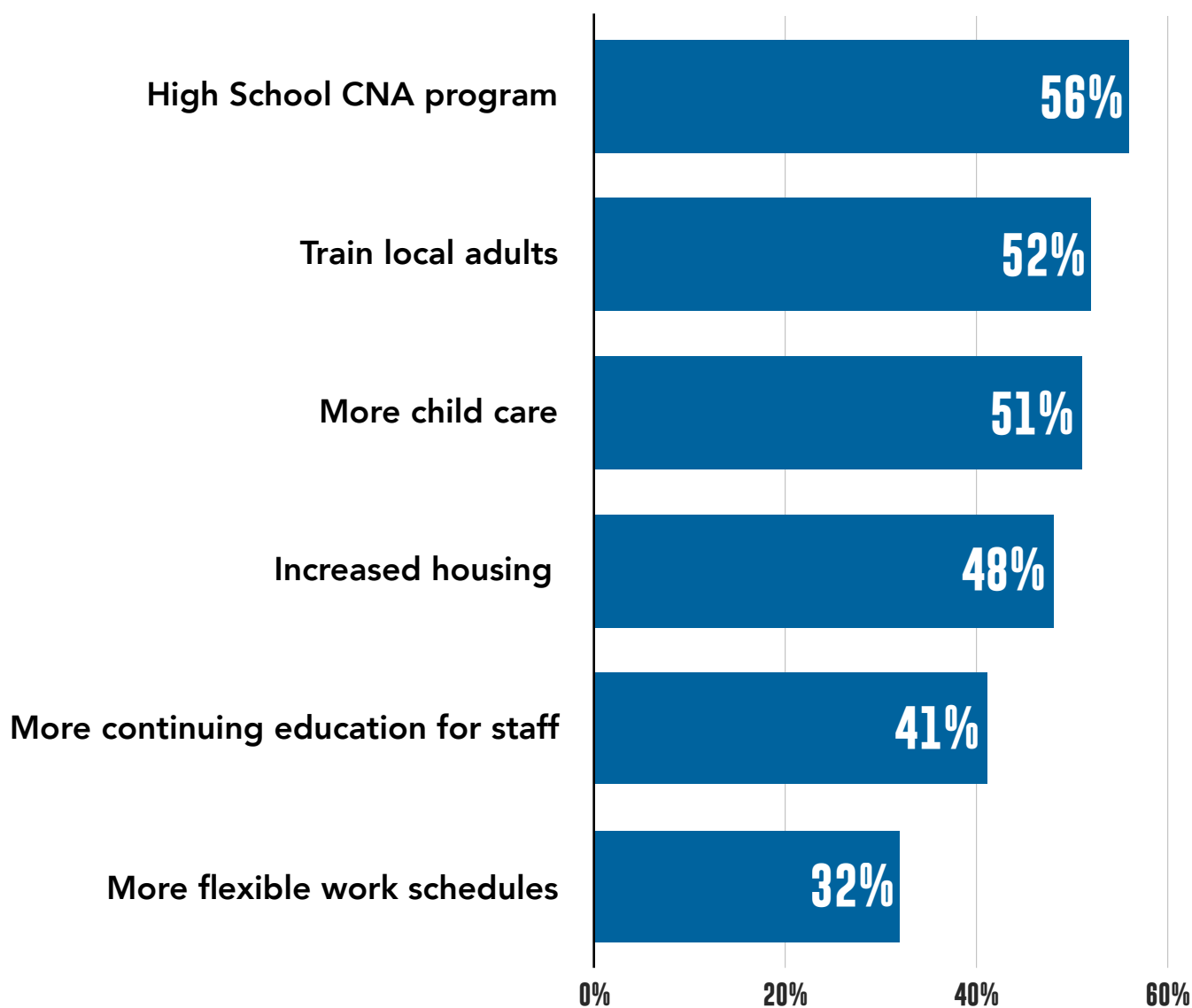
Alaska Native Responses Only

Answer Options	High level demand/ need	Medium level demand/ need	Low level demand/ need	No need or demand at this time	Unsure
More substance abuse/ drug treatment services	64%	22%	7%	3%	4%
Develop more recreation opportunities for youth	64%	29%	5%	2%	0%
More in home health care services for seniors	53%	32%	3%	2%	10%
More assisted living units for Wrangell's seniors	51%	35%	4%	2%	8%
Provide local eye care	51%	37%	8%	1%	2%
More mental health care services	48%	38%	8%	1%	5%
Develop a culturally appropriate, nature-based substance abuse program (for adults)	48%	33%	8%	3%	8%
Expand dental care availability in Wrangell	48%	36%	10%	4%	3%
Create a traditional foods program	42%	38%	16%	1%	3%
Teach local health care classes	34%	45%	15%	1%	5%
Increase local dialysis options	24%	34%	12%	1%	28%

How Important are the Following **Health Care Workforce Related Needs** in Wrangell?

To further understand the community's health care priorities, Wrangell residents were also asked about health care workforce development needs. The best way to grow and support Wrangell's health care workforce, according to the survey respondents, is to reinstate the high school training program for certified nursing assistants (CNAs).

Respondents saying this has a high level of demand or need



Respondent comments regarding these questions on page 86.

How Important are the Following **Health Care Workforce Related Needs** in Wrangell?

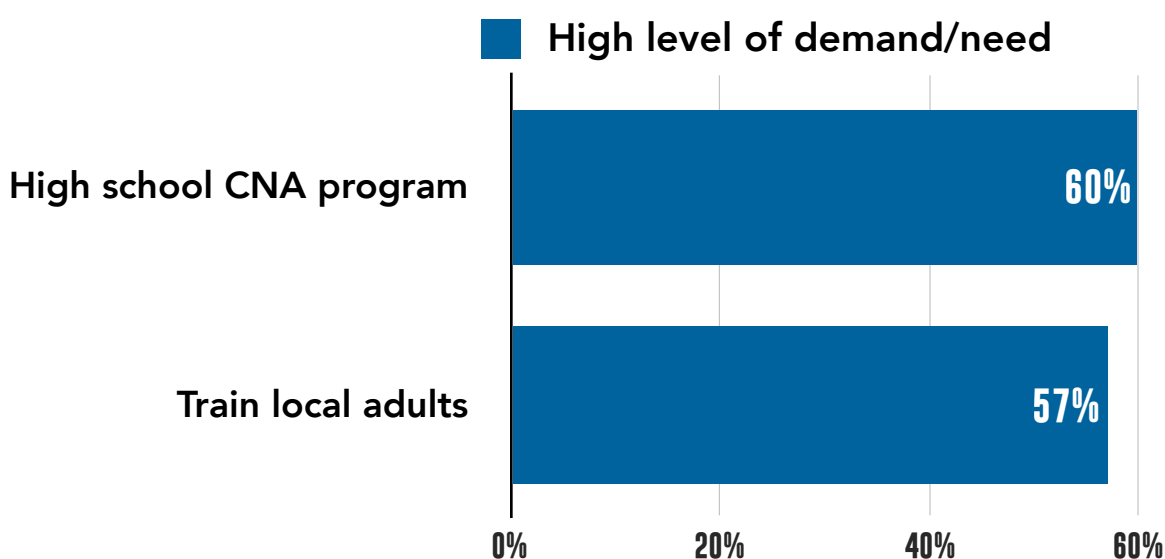
The table below breaks out all survey responses to this question. Most (87% and 88% respectively) of all Wrangell residents feel that the high school CNA program should be reinstated and local adults should have access to health care training in order to support the health care workforce needs in the community.

Answer Options	High level demand/ need	Medium level demand/ need	Low level demand/ need	No need or demand at this time	Unsure
Reinstate high school training program for certified nursing assistants (CNA)	56%	31%	5%	1%	7%
Train local adults to become part of the health care workforce	52%	36%	6%	1%	6%
Increase childcare slots to support health care workers	51%	29%	7%	2%	12%
Increased housing availability for health care employees	48%	30%	9%	3%	11%
More continuing education opportunities for existing health care staff	41%	41%	4%	2%	13%
Develop more flexible work schedules for health care workers	32%	35%	11%	4%	19%

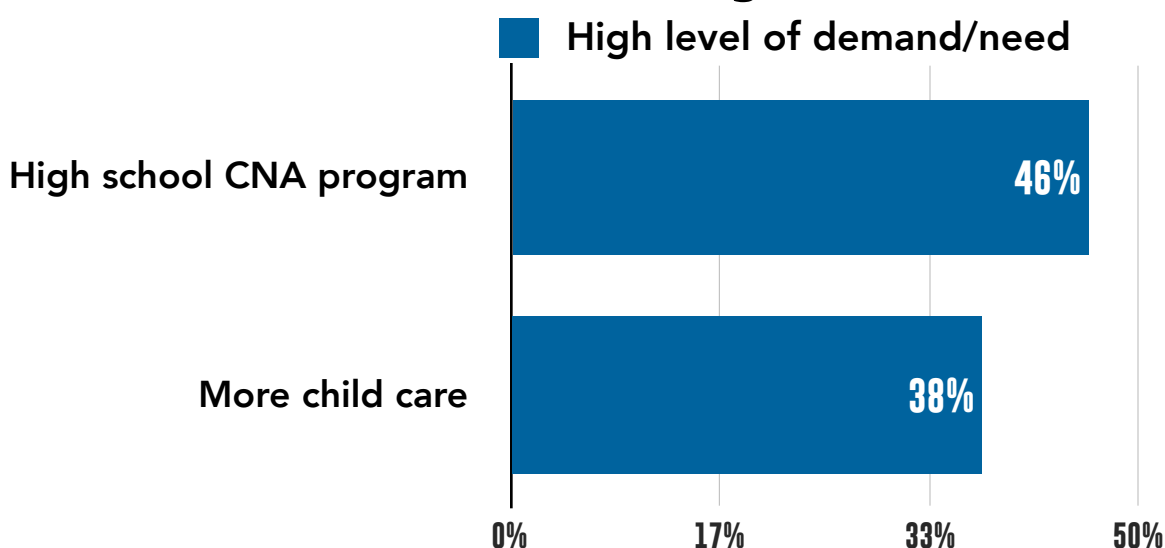
How Important are the Following **Health Care Workforce Related Needs** in Wrangell?

When health care workforce priorities were broken out by the sub-demographics of Alaska Native only and those between the ages of 10 and 18 the top priority remained the same. However, youth say that increased child care availability is their second priority for local health care workforce development.

Alaska Native Only



Youth Only



How Important are the Following **Health Care Workforce Related Needs** in Wrangell?

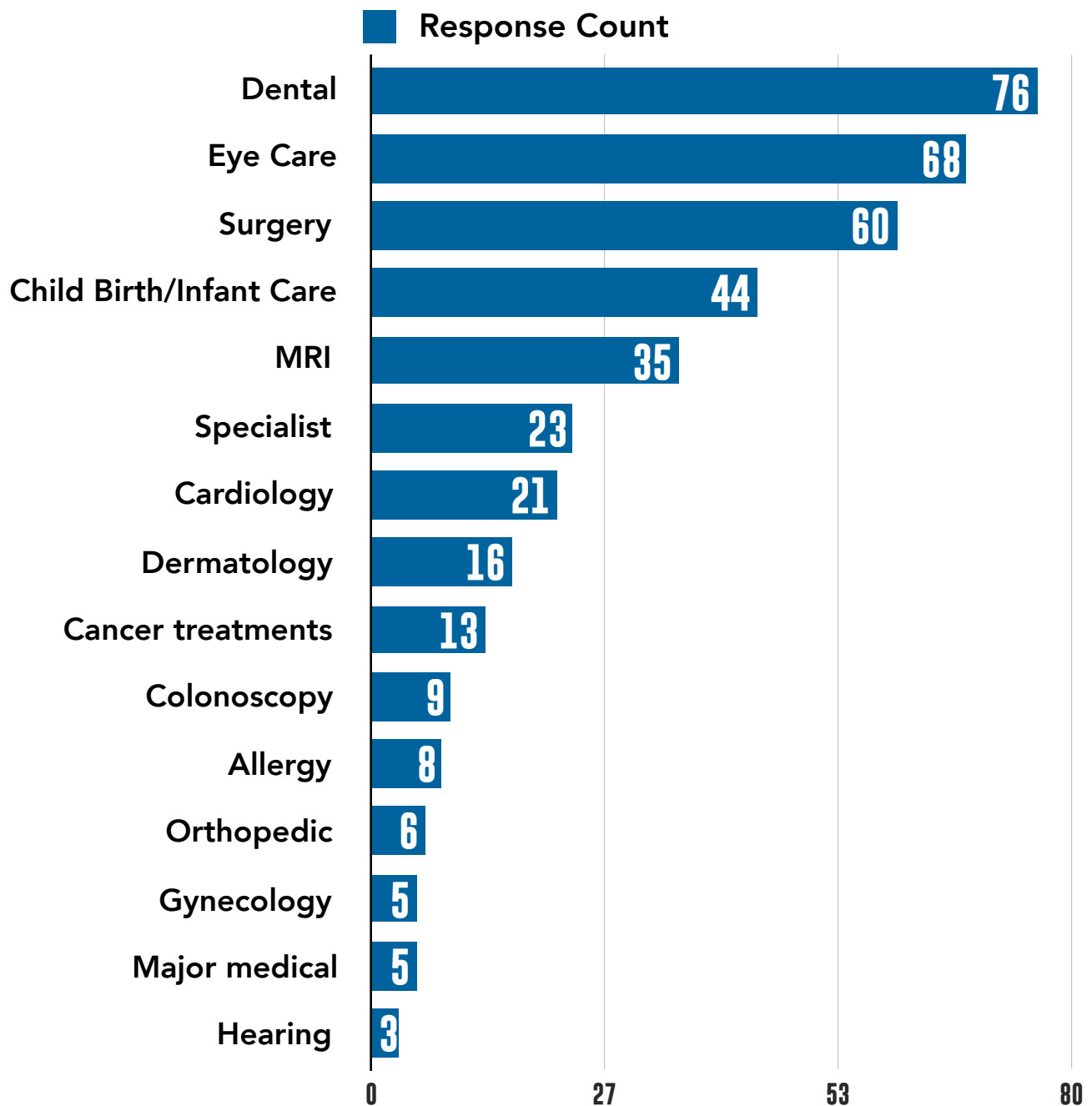
The following table reviews the responses of all Wrangell Alaska Native survey participants to this question. Generally the responses were very similar to the community as a whole, although the magnitude of support for local health care workforce training program is higher among Alaska Native respondents.

Alaska Native Responses Only

Answer Options	High level demand/ need	Medium level demand/ need	Low level demand/ need	No need or demand at this time	Unsure
Reinstate high school training program for certified nursing assistants (CNA)	60%	32%	4%	1%	3%
Train local adults to become part of the health care workforce	57%	32%	6%	1%	4%
Increased housing availability for health care employees	53%	30%	8%	2%	7%
Increase childcare slots to support health care workers	49%	30%	8%	2%	10%
More continuing education opportunities for existing health care staff	40%	42%	5%	1%	12%
Develop more flexible work schedules for health care workers	38%	34%	10%	1%	16%

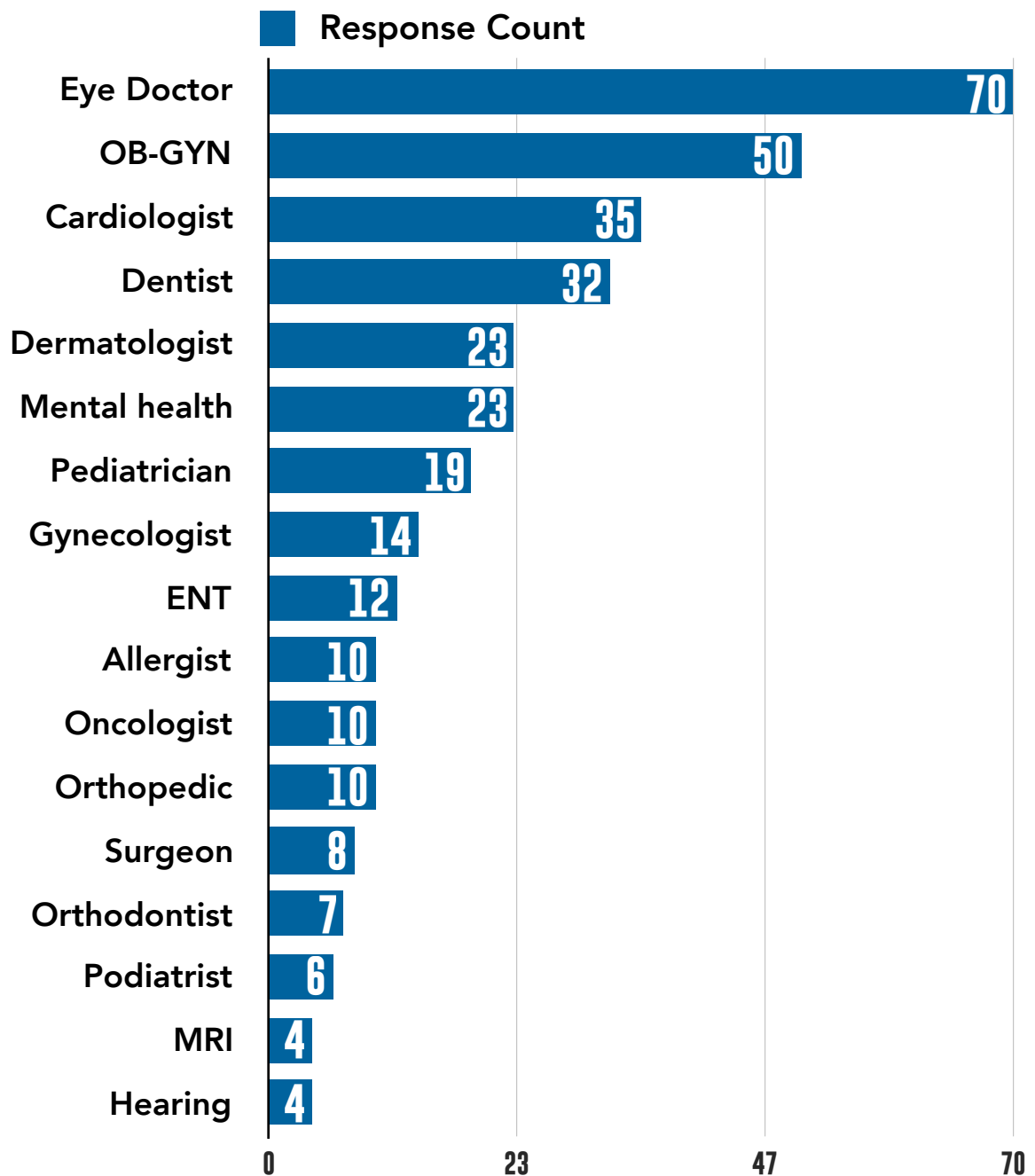
Which Health Care Procedures do you Currently do **Outside of Wrangell?**

The survey contained an open-ended question regarding which health care procedures residents have done outside of the community. The chart below tracks the word counts of related words in each of the below categories. Dental care, eye care, and surgery were the top three health care needs that are most often met outside of the community. The full responses to this open-ended question are provided at the end of this document, beginning on page 30.



Which Types of Health Care Specialists Would you Most Like to see in Wrangell?

The survey contained an open-ended question asking respondents which types of health care specialists they would most like to have in Wrangell. The top answers included eye doctors and OB-GYNs. The full responses to this open-ended question are provided at the end of this document, beginning on page 40.

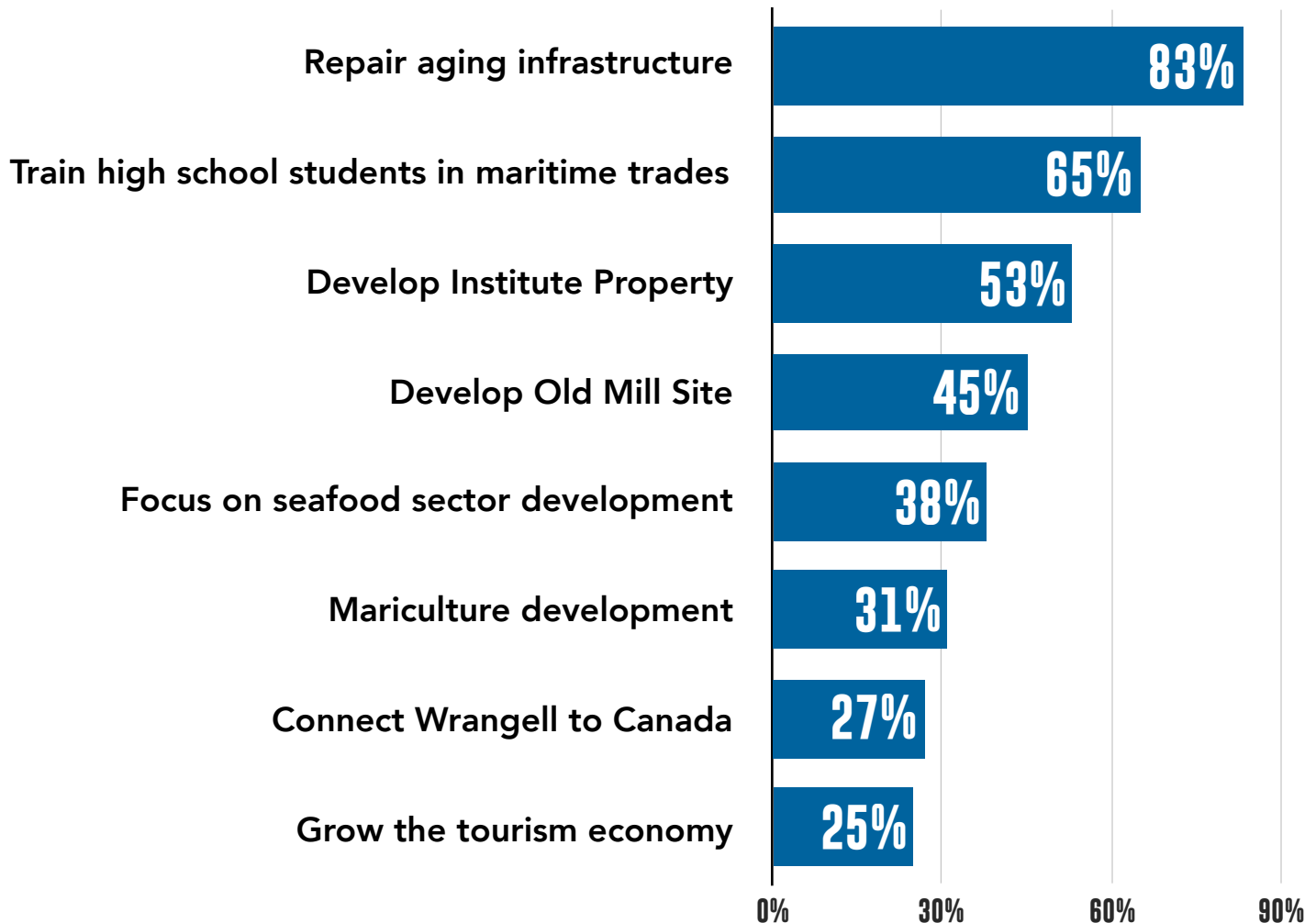


Economic Development

How Important are the Following Economic Development Initiatives in Wrangell?

Respondents were asked which of eight economic development initiatives are the most valuable to the community at this time. Nearly everyone (83% of respondents) said the economic priority with the highest demand is to repair aging infrastructure. Two-thirds (65%) of Wrangell residents say that training high school students in the maritime trades has a high level of demand or need. Connecting Wrangell to Canada via the Bradfield and growing the tourism economy rank at the bottom of the eight priorities.

Respondents saying this has a high level of demand or need



Respondent comments regarding these questions on page 87.

How Important are the Following Economic Development Initiatives in Wrangell?

The table below breaks out all survey responses regarding the importance of economic development initiatives in the community. Nearly all respondents (97%) say that repairing the community's infrastructure is a high or medium level of demand. While growing the tourism economy has the lowest level of high demand, nearly two-thirds of Wrangell residents (61%) say it has a high or medium level of demand. Connecting Wrangell to Canada has the high percentage of respondents (23%) who say there is no demand in the community for this initiative.

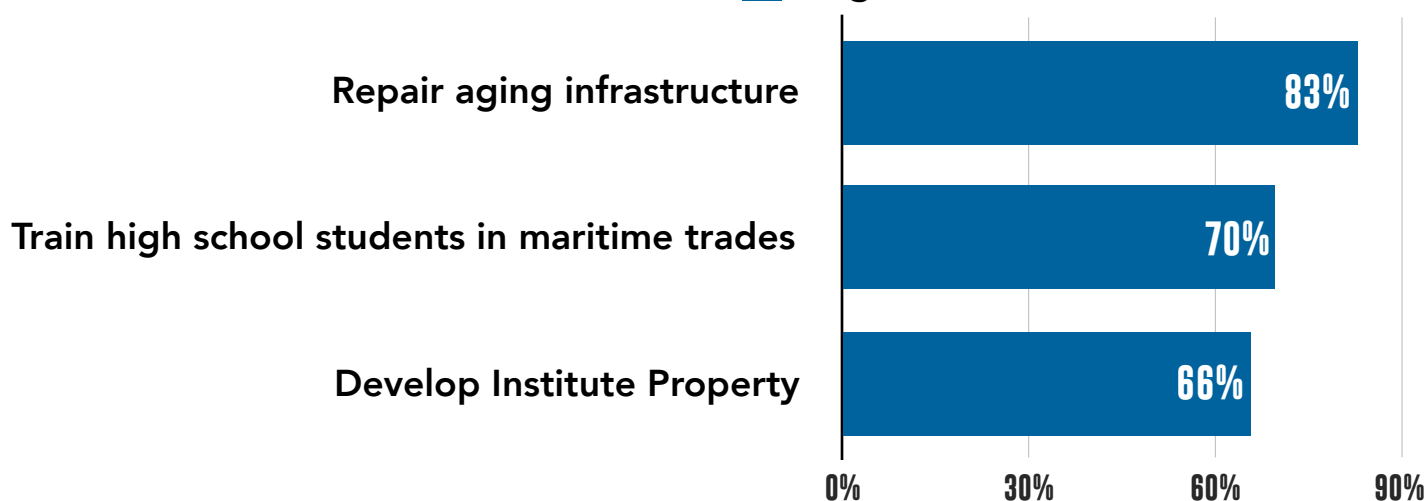
Answer Options	High level demand/ need	Medium level demand/ need	Low level demand/ need	No need or demand at this time	Unsure
Repair aging infrastructure (such as water, school, etc.)	83%	14%	2%	0%	1%
Train high school students in maritime trades (i.e. wood working, marine electronics, vessel repair)	65%	26%	5%	1%	3%
Develop Institute Property (new mixed use neighborhood with housing)	53%	28%	8%	3%	7%
Develop Old Mill Site (i.e. build dock there and move most freight yard and ship yard services)	45%	29%	10%	7%	10%
Focus on seafood sector development	38%	42%	10%	2%	8%
Mariculture development (i.e. oyster or seaweed growing, harvesting and processing)	31%	35%	20%	5%	8%
Connect Wrangell to Canada (e.g. Bradfield road)	27%	19%	20%	23%	11%
Grow the tourism economy	25%	36%	25%	10%	4%

How Important are the Following Economic Development Initiatives in Wrangell?

The population as a whole, Alaska Natives, and Wrangell's youth all share the same top three economic development priorities for the community—repair aging infrastructure, train students in maritime trades, and develop the Institute Property—although the magnitude of support for these initiatives was somewhat lower with Wrangell's 10 through 18 year olds.

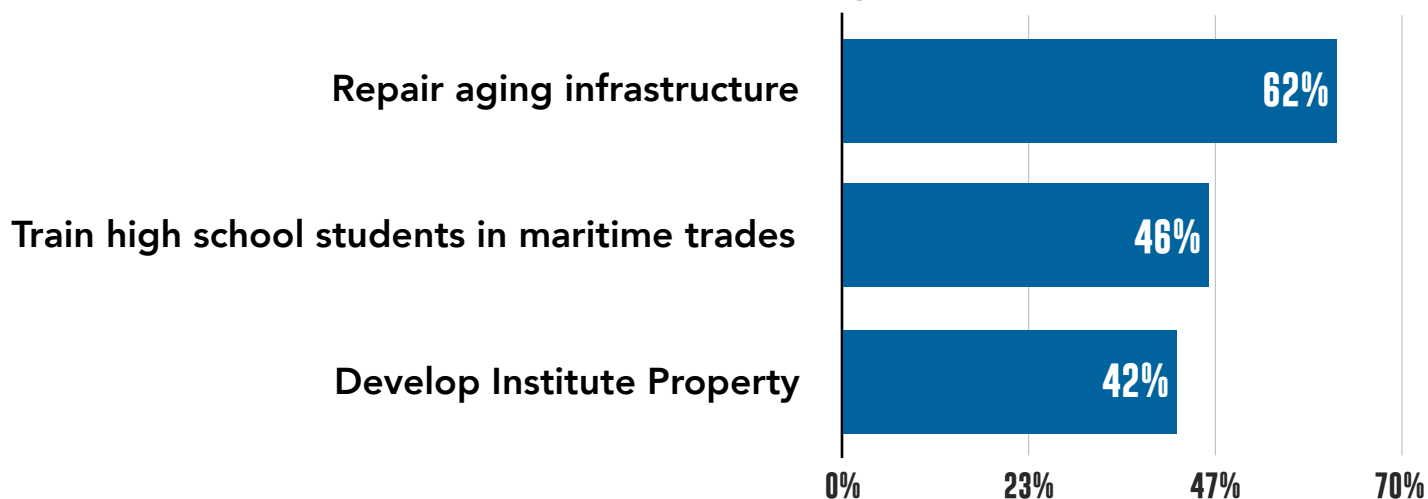
Alaska Native Only

■ High level of demand/need



Youth Only

■ High level of demand/need



How Important are the Following Economic Development Initiatives in Wrangell?

The following table reviews the responses of all Wrangell Alaska Native survey participants to the question of economic development priorities. Interestingly, there was no change in the priority order of economic development initiatives between the population of Wrangell, as a whole, and the Alaska Native only population.

Alaska Native Responses Only

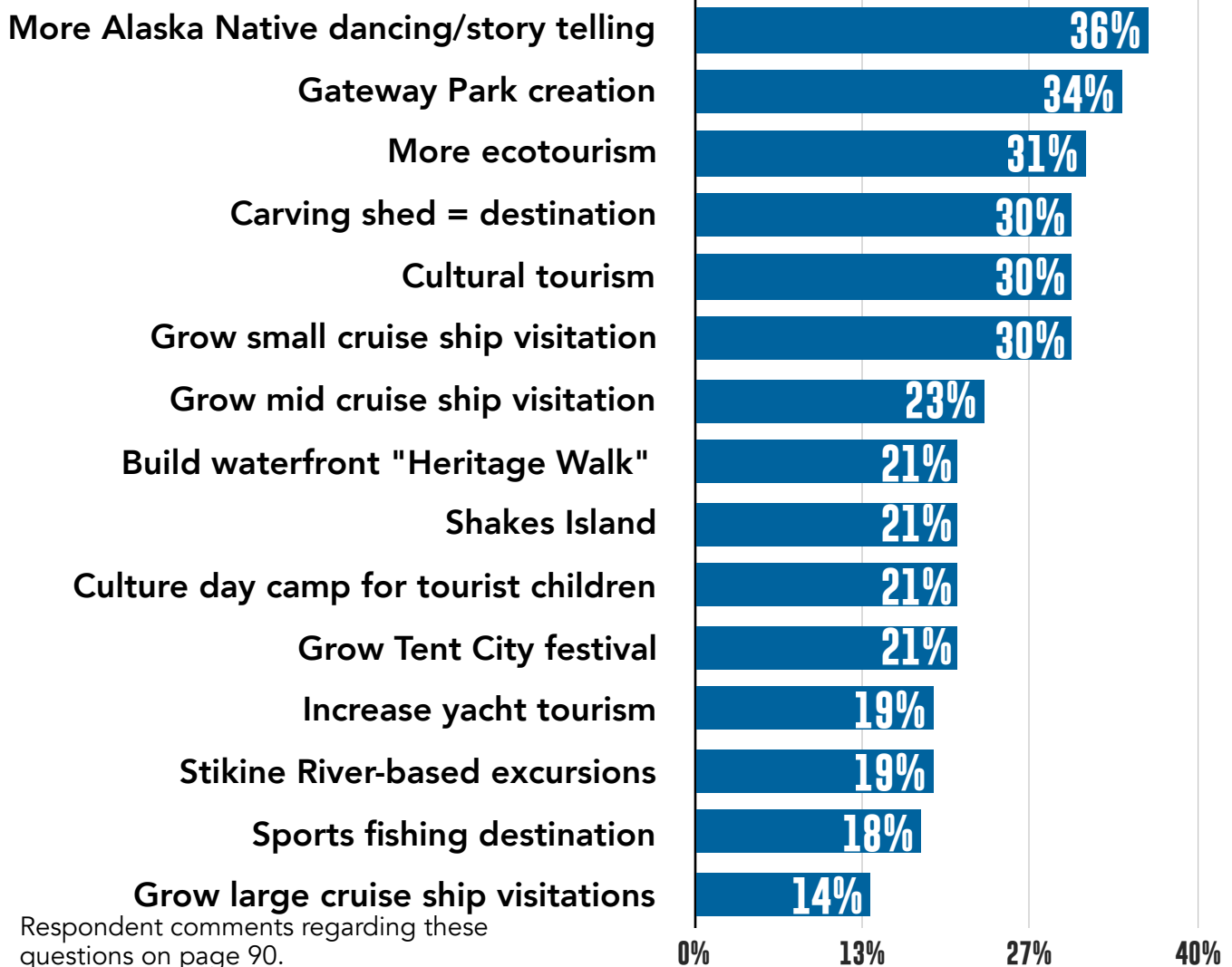
Answer Options	High level demand/ need	Medium level demand/ need	Low level demand/ need	No need or demand at this time	Unsure
Repair aging infrastructure (such as water, school, etc.)	83%	16%	1%	0%	0%
Train high school students in maritime trades (i.e. wood working, marine electronics, vessel repair)	70%	25%	4%	0%	1%
Develop Institute Property (new mixed use neighborhood with housing)	67%	19%	5%	4%	6%
Develop Old Mill Site (i.e. build dock there and move most freight yard and ship yard services)	51%	26%	7%	6%	10%
Focus on seafood sector development	43%	39%	10%	1%	7%
Mariculture development (i.e. oyster or seaweed growing, harvesting and processing)	40%	30%	18%	5%	7%
Connect Wrangell to Canada (e.g. Bradfield road)	32%	18%	19%	21%	10%
Grow the tourism economy	29%	35%	25%	9%	2%

Tourism

How Important are the Following Tourism Related Needs in Wrangell?

Survey respondents were given a list of 15 tourism initiatives and asked about the demand or need for each in the community. Respondents feel that the greatest area of demand in the local visitor industry is increased Alaska Native dancing and story telling, with 36% of respondents calling this a high level of demand or need. More than one-third of respondents (34%) say that Gateway Park, a proposed concept to move existing freight services from downtown Wrangell to the Old Mill site and create a park in its place for visitors and locals alike, has a high level of demand in the community. Wrangell residents do not appear to want to make the community into a sports fishing or large cruise ship destination.

Respondents saying this has a high level of demand or need



Respondent comments regarding these questions on page 90.

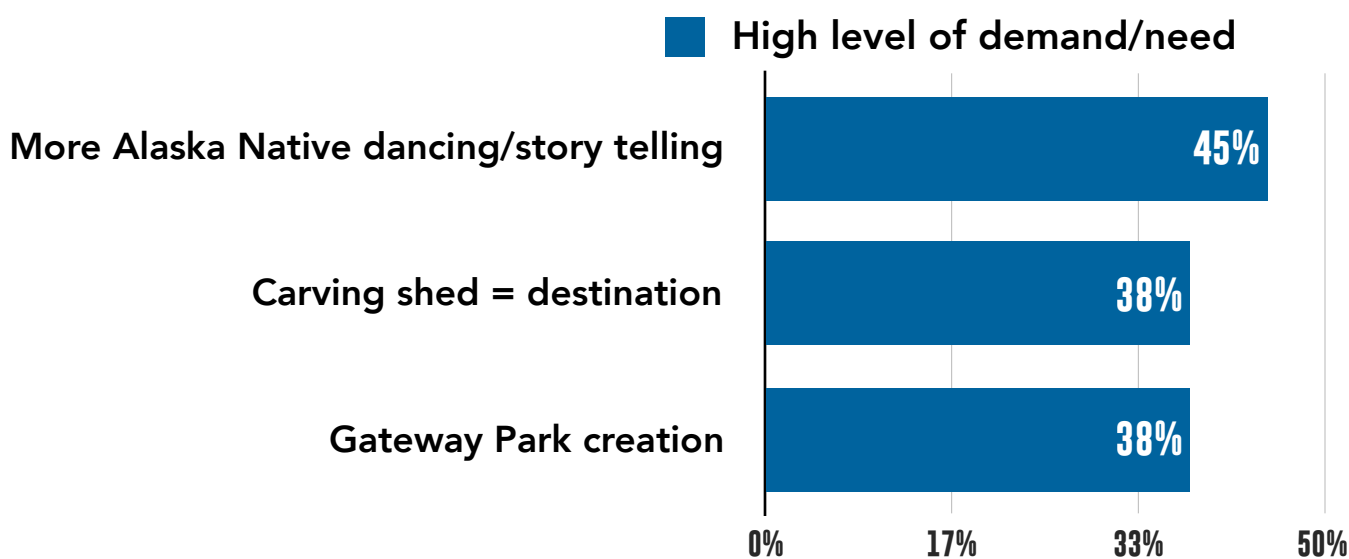
How Important are the Following Tourism Related Needs in Wrangell?

Answer Options	High level demand/ need	Medium level demand/ need	Low level demand/ need	No need or demand at this time	Unsure
More Alaska Native dancing and storytelling for visitors	36%	39%	13%	4%	9%
Gateway Park Creation: Move existing freight services to the Old Mill site and create a gateway park in its place (for visitors and locals)	34%	28%	14%	14%	9%
Develop more ecotourism (tourism that focuses on nature and the environment)	31%	38%	15%	8%	7%
Make the carving shed into a visitor excursion/destination	30%	40%	16%	5%	9%
Develop cultural tourism opportunities for visitors	30%	39%	17%	7%	7%
Grow small cruise ship visitation (30 to 170 passengers per vessel)	30%	33%	18%	11%	8%
Grow mid cruise ship visitations (200 to 1,000 passengers per vessel)	23%	32%	21%	16%	8%
Build elevated waterfront "Heritage Walk" pedestrian walkway extending between City Dock to the Nolan Center	21%	29%	22%	22%	6%
Create more walking tours to Shakes Island	21%	34%	25%	8%	13%
Develop a culture day camp for tourist children	21%	27%	30%	12%	9%
Grow Tent City festival	21%	31%	22%	16%	11%
Increase yacht tourism	19%	33%	24%	13%	11%
Develop more Stikine River-based excursions	19%	28%	26%	18%	9%
Make Wrangell into a sports fishing destination (i.e. more charters, lodges, etc.)	18%	31%	25%	19%	8%
Grow large cruise ship visitations (1,300 passengers+ per vessel)	14%	22%	24%	33%	8%

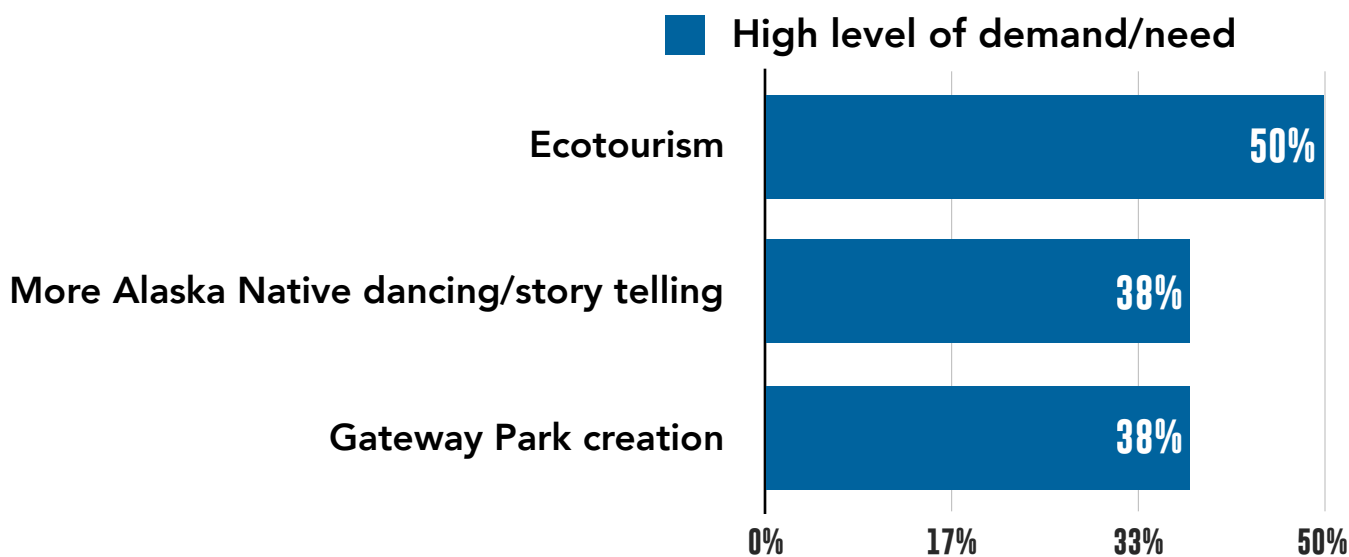
How Important are the Following Economic Development Initiatives in Wrangell?

Wrangell's Alaska Native respondents' top three tourism priorities include increased Alaska Native dancing performances, making the carving shed into a visitor destination, and developing Gateway Park. The top priority of the community's youth is to develop more ecotourism excursions. The lowest priority of each sub-demographic is large cruise ship visitation.

Alaska Native Only



Youth Only



How Important are the Following Tourism Related Needs in Wrangell?

Alaska Native Responses Only

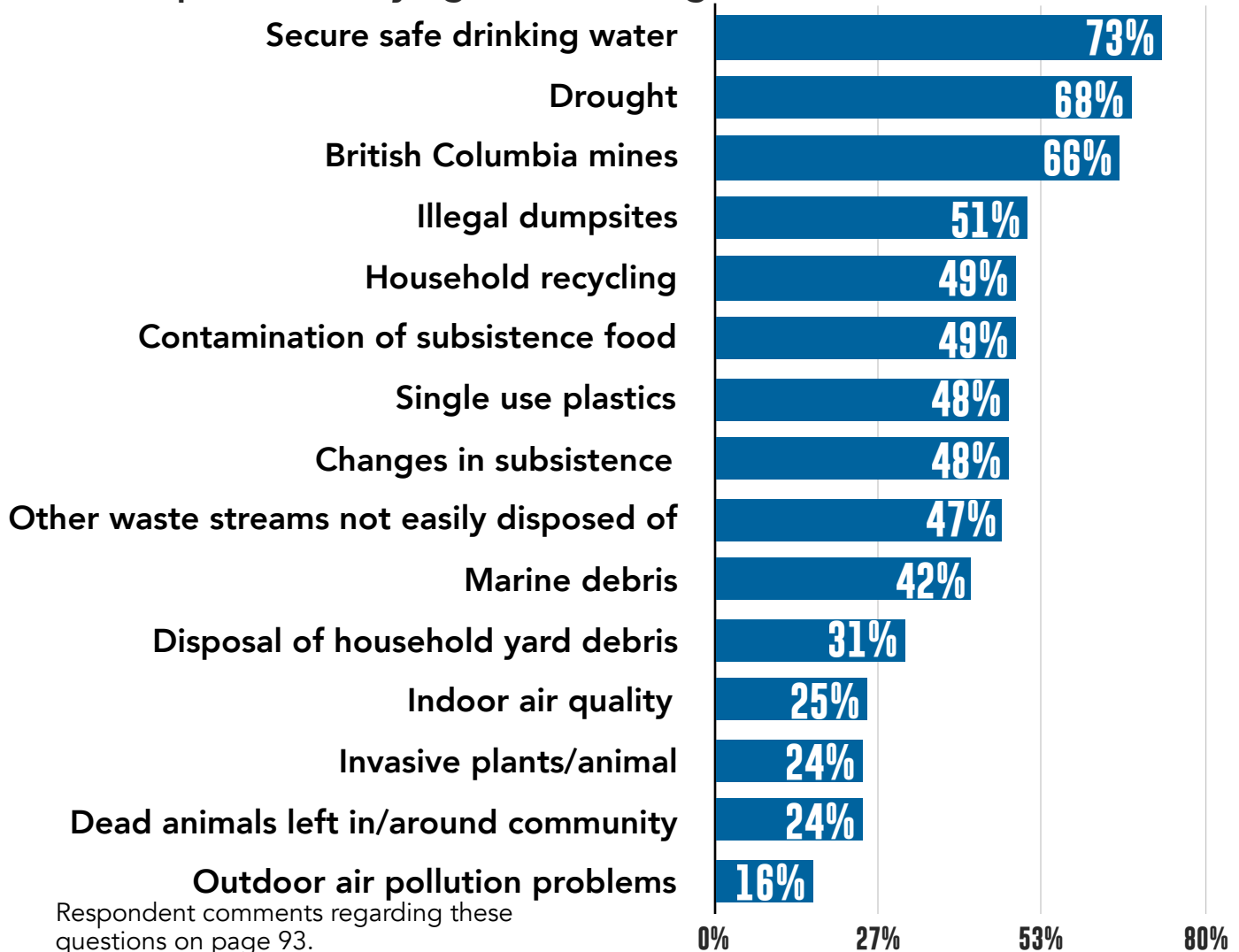
Answer Options	High level demand/ need	Medium level demand/ need	Low level demand/ need	No need or demand at this time	Unsure
More Alaska Native dancing and storytelling for visitors	45%	35%	10%	2%	8%
Make the carving shed into a visitor excursion/destination	38%	36%	14%	5%	8%
Gateway Park Creation: Move existing freight services to the Old Mill site and create a gateway park in its place (for visitors and locals)	38%	24%	14%	12%	12%
Develop more ecotourism (tourism that focuses on nature and the environment)	37%	37%	12%	8%	7%
Develop cultural tourism opportunities for visitors	34%	35%	19%	6%	6%
Grow small cruise ship visitation (30 to 170 passengers per vessel)	33%	27%	17%	12%	11%
Grow Tent City festival	30%	32%	16%	15%	7%
Develop a culture day camp for tourist children	27%	26%	24%	14%	10%
Create more walking tours to Shakes Island	26%	36%	20%	8%	10%
Grow mid cruise ship visitations (200 to 1,000 passengers per vessel)	25%	32%	19%	16%	9%
Build elevated waterfront "Heritage Walk" pedestrian walkway extending between City Dock to the Nolan Center	23%	32%	21%	19%	5%
Make Wrangell into a sports fishing destination (i.e. more charters, lodges, etc.)	23%	31%	24%	18%	5%
Increase yacht tourism	23%	35%	19%	15%	8%
Develop more Stikine River-based excursions	21%	26%	25%	19%	9%
Grow large cruise ship visitations (1,300 passengers+ per vessel)	17%	23%	25%	28%	8%

Tribal IGAP Priorities (Indian General Assistance Program)

How important is it to focus on the following environmental priorities/concerns in Wrangell?

The survey also contained 15 environmental priorities or concerns, and asked respondents to evaluate each individually, and indicate if it is a high demand or concern, or something else. Nearly three-quarters of respondents (73%) say that securing safe drinking water has the highest level of demand/concern, following by drought management, and potential impacts of British Columbia mines on the Stikine River. Outdoor air pollution was rated as the community's lowest concern.

Respondents saying this has a high level of demand or concern



Respondent comments regarding these questions on page 93.

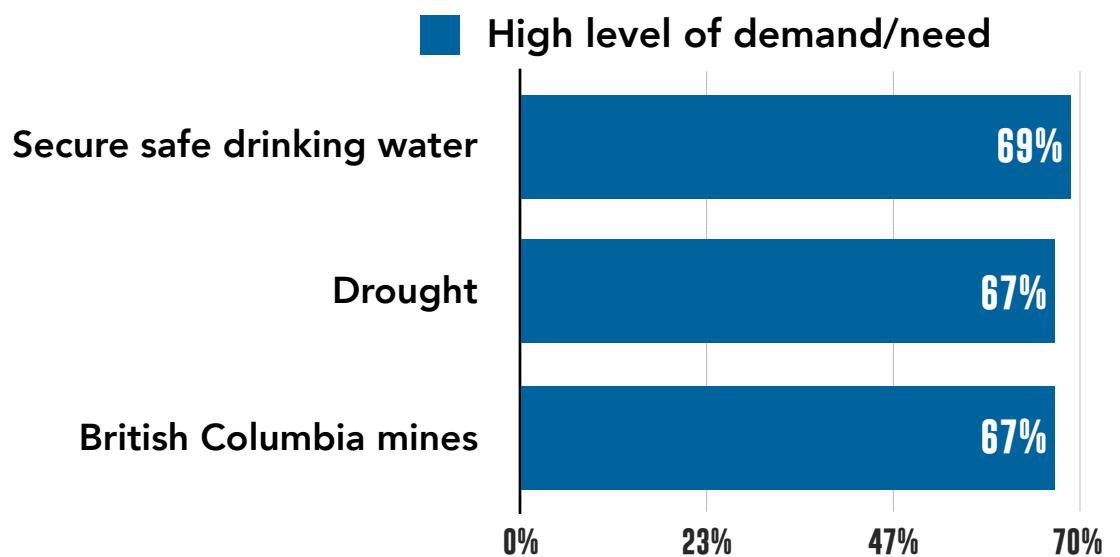
How important are the following **environmental priorities/concerns** in Wrangell?

Answer Options	High level demand/ need	Medium level demand/ need	Low level demand/ need	No need or demand at this time	Unsure
Secure safe drinking water	73%	18%	5%	3%	1%
Drought (energy concerns, education regarding water conservation)	68%	21%	5%	3%	2%
British Columbia mines that can impact the Stikine River	66%	17%	6%	3%	8%
Illegal dumpsites (along the side of the road/trails etc.)	51%	32%	10%	3%	3%
Household recycling	49%	34%	11%	3%	3%
Contamination of subsistence resources/food (fish, shellfish, berries, deer, moose, etc.)	49%	27%	12%	5%	6%
Single use plastics (grocery bags, bottles, etc.)	48%	30%	13%	5%	4%
Changes in subsistence (eg. Fewer deer, less salmon in specific areas, sea otter population, berry season altered, increased PSP in shellfish in SE, etc.)	48%	25%	11%	7%	8%
Other waste streams not easily disposed of (sand blast media, packing plastic, cardboard, construction materials, tire, vehicles.)	47%	32%	11%	4%	6%
Marine debris (including derelict vessels, beach debris, harbor debris)	42%	36%	13%	5%	5%
Disposal of household yard debris	31%	34%	23%	7%	5%
Indoor air quality (from wood smoke, mold, cleaning chemicals, etc.)	25%	32%	29%	9%	5%
Invasive plants/animal	24%	34%	26%	6%	9%
Dead animals left in/around community	24%	30%	28%	13%	5%
Outdoor air pollution problems (from wood smoke, industry fumes, vehicle exhaust, etc.)	16%	28%	32%	20%	5%

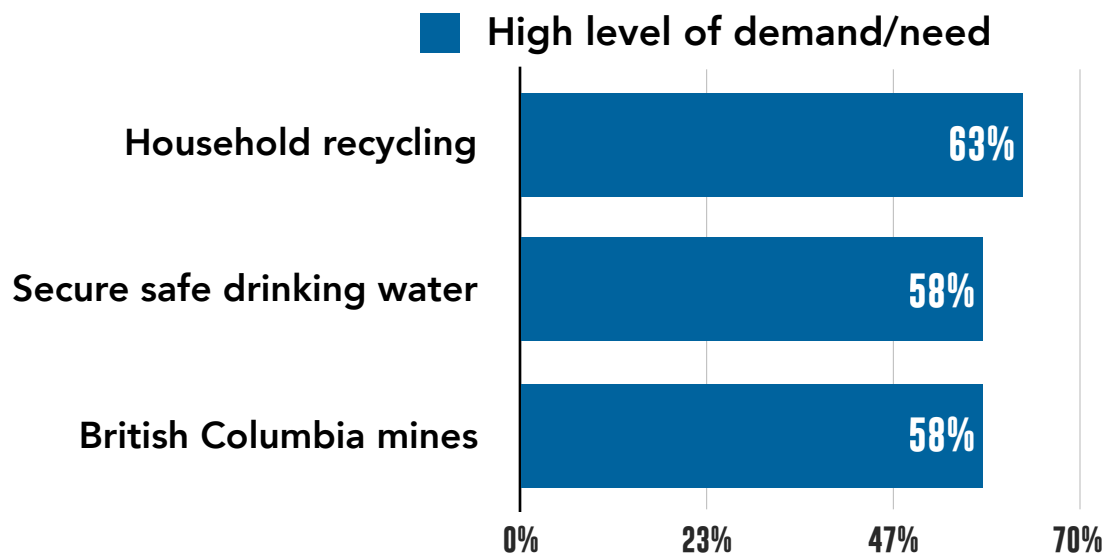
How important are the following **environmental priorities/concerns** in Wrangell?

The top environmental priorities for Wrangell's Alaska Native community mirrored those of the community at-large. The highest priority of youth respondents to the survey is to better manage household recycling.

Alaska Native Only



Youth Only



How important are the following environmental priorities/concerns in Wrangell?

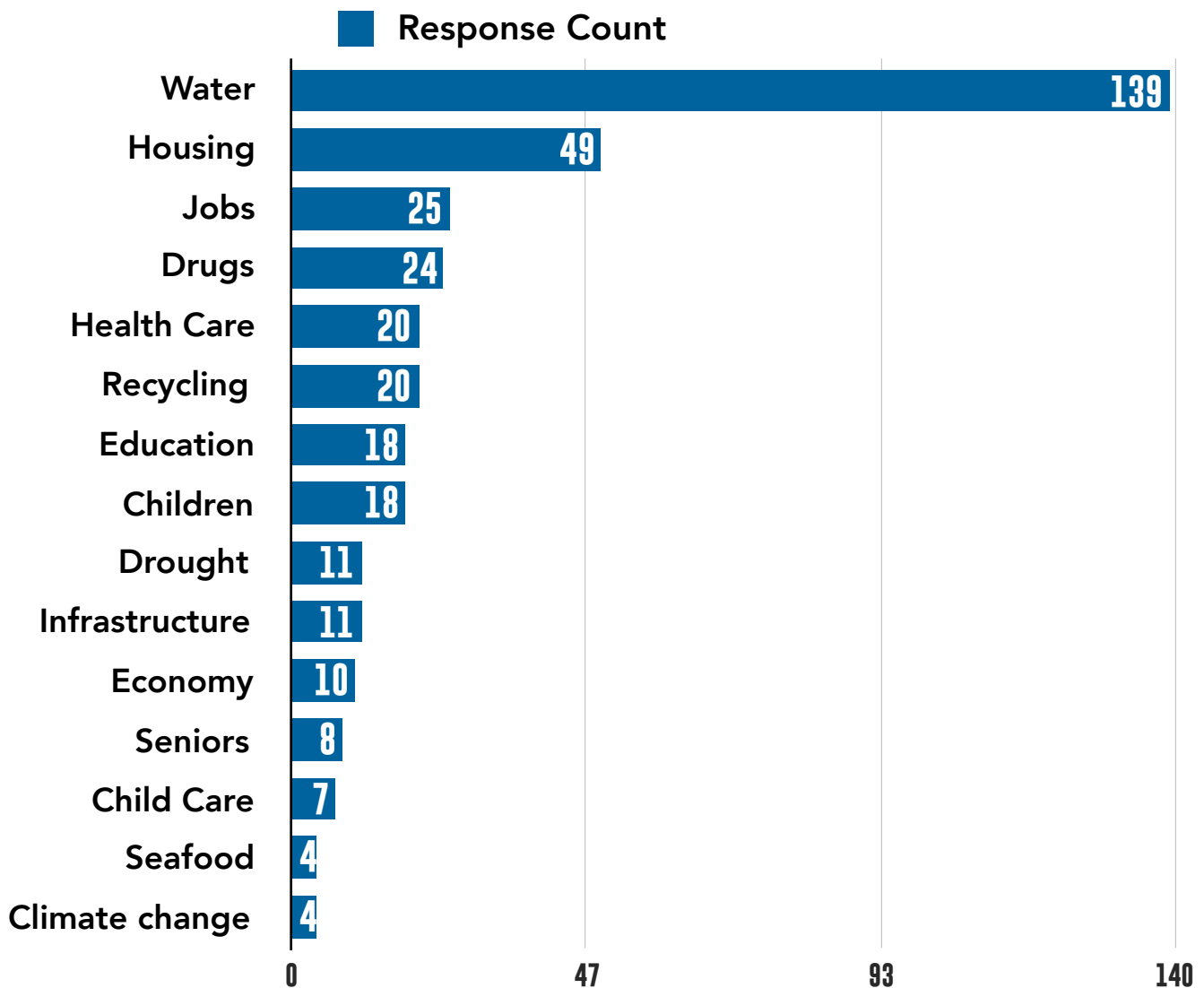
Alaska Native Responses Only

Answer Options	High level demand/ need	Medium level demand/ need	Low level demand/ need	No need or demand at this time	Unsure
Secure safe drinking water	69%	18%	8%	3%	3%
Drought (energy concerns, education regarding water conservation)	67%	24%	6%	1%	1%
British Columbia mines that can impact the Stikine River	67%	18%	6%	1%	8%
Household recycling	54%	31%	9%	3%	3%
Single use plastics (grocery bags, bottles, etc.)	53%	29%	10%	3%	5%
Changes in subsistence (eg. Fewer deer, less salmon in specific areas, sea otter population, berry season altered, increased PSP in shellfish in SE, etc.)	52%	23%	9%	6%	10%
Illegal dumpsites (along the side of the road/trails etc.)	51%	32%	11%	2%	4%
Other waste streams not easily disposed of (sand blast media, packing plastic, cardboard, construction materials, tire, vehicles.)	48%	33%	11%	3%	5%
Contamination of subsistence resources/food (fish, shellfish, berries, deer, moose, etc.)	48%	27%	15%	1%	9%
Marine debris (including derelict vessels, beach debris, harbor debris)	44%	39%	9%	3%	5%
Disposal of household yard debris	37%	30%	21%	5%	7%
Indoor air quality (from wood smoke, mold, cleaning chemicals, etc.)	34%	30%	27%	3%	6%
Invasive plants/animal	27%	35%	22%	4%	11%
Dead animals left in/around community	27%	29%	29%	10%	6%
Outdoor air pollution problems (from wood smoke, industry fumes, vehicle exhaust, etc.)	19%	30%	30%	16%	5%

General Citizen Feedback

How would you describe the **most critical need or issue** in Wrangell?

Wrangell survey takers were asked to describe, in their own words, the most critical need or issue in the community. The chart below tracks the word counts of related words or phrases in each of the below categories. Wrangell residents are most worried about their water supply. Phrases captured in that category include the following: water, water supply, water system, water treatment, water shortage, water plant, reservoir, drinking water, etc. Housing-related issues garnered the second greatest number of comments. The full responses to this open-ended question are listed at the end of this document, beginning on page 62.



Participant Overview

The response rate to this survey was very high. A total of 482 residents from Wrangell responded to the community prioritization survey. The survey was open to all residents age 10 and older. Nearly a quarter (23%) of all Wrangell residents in this demographic participated in the survey. Among younger age groupings this percentage was even higher. More than a third of all Wrangell residents in their 20s and 30s participated in the survey, along with nearly a third of those in their 40s. The average participant age is 46.

Approximately one-third (35%) of respondents are Alaska Native, and just over a quarter of all survey takers are enrolled in the Wrangell Cooperative Association.

Are you enrolled in the Wrangell Cooperative Association?

Answer Options	Response Percent
Yes	26%
No	61%
Not Sure	13%

Are you Alaska Native?

Answer Options	Response Percent
Yes	35%
No	65%

What is your age?

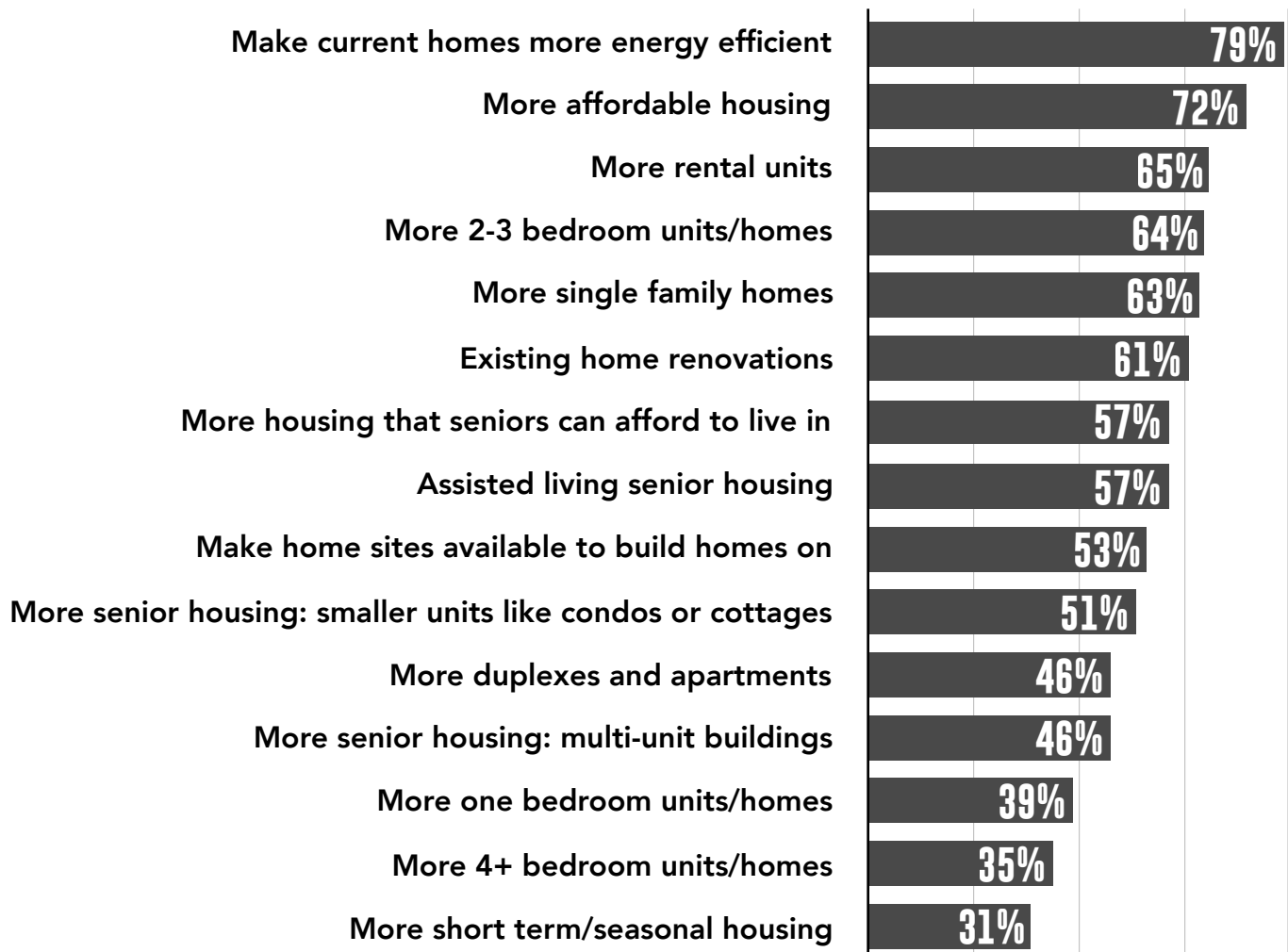
Age of Respondent	As a Percent of Total Survey Responses	As a Percentage of total age demographic in community
Ten to 19	6%	11%
Twenties	16%	35%
Thirties	18%	34%
Forties	15%	30%
Fifties	18%	24%
Sixties	18%	18%
Seventies	8%	17%
Eighties	1%	4%
Ninties	0.5%	17%

Housing

How Important are the Following Tribal Housing Needs?

Earlier this summer, a separate housing survey was conducted among Alaska Native households in Wrangell to understand the most pressing tribal housing needs in the community. The most critical housing need in Wrangell, according to the survey, is to make homes more energy efficient, which 79% of survey respondents say is a high priority. This is followed by a call for more affordable housing (72%). In general, tribal respondents noted a housing shortage, with some version of “more housing”—be it rental units, units with 2-3 bedrooms, or more single family homes—dominating the top priorities in the community, after energy efficiency. To see the full Wrangell tribal housing report, go to www.regionalhousingauthority.org/2019housingsurvey/.

Respondents saying this has a high level of demand or need



Open-Ended Responses

The following pages present the full responses to each of the 10 survey questions that included an opportunity to provide written answers.

Which Health Care Procedures do you Currently do **Outside** of Wrangell?

- Advanced dental work, surgery, to see a specialist
- All
- All
- All
- All but band aid.
- all dr. referrals
- all medical
- all of them
- All of them. Wrangell's care is inconsistent and sometimes incorrect.
- All specialty care: Cardio, Gastroenterology, Hearing, Extensive Dental
- All the tests and procedures my Gastroenteritis does.
- Allergies
- Allergies
- Allergists
- Allergy screenings
- Allergy, OBGYN, Any other operation procedures
- Almost All
- Almost all of my care comes from Seattle because there are no facilities in the whole state that can provide with the level of care I need--as per Anchorage pulmonary specialists--Stage 4 COPD, Stage 4 Osteoporosis, Type 2 Diabetes, compression fractures of the spine, and A-Fib.
- Almost all of them. Before working on these small things, make Wrangell medical a competent place to get work done.
- almost everything
- Almost everything
- Annual exams
- Any major medical
- any surgery
- Any surgeries would mean I have to leave Wrangell

- Any time I need to see a specialty provider. Personally, I see a dermatologist and a rheumatologist
- Anything except ultrasounds and x rays
- Anything major down to a consult with a dr.
- Anything other than a checkup
- Anything other than general care
- Anything surgical or requiring a specialist
- anything surgical or that can't be done here on the island
- Anything surgical. Even if it is outpatient procedure.
- Anything that needs a specialist for it. Wrangell always tries to diagnose and then they send you out.
- Anything to do with pediatrics
- Autistic needs. ABA therapy
- Baby delivery, allergy testing, orthodontic care
- Baby delivery, eye care
- Birth
- Birth, dental procedures, ENT
- Birth, surgery, specialist care
- Birthing
- Bone
- broken bones
- Cancer , eye care
- Cancer care
- Cancer care, eye care
- cancer check-up, bone scan
- cancer doctor
- cancer doctor
- Cancer screening and Dental
- Cancer treatments
- Caps on my teeth a few years ago
- cardiac and strokes, anything life threatening
- Cardiac Care, Orthopedic Care, Surgeries, and Gastrin ology.
- Cardiac, Dental, Vision
- Cardiologist orthopedic
- cardiology
- Cardiology
- cardiology, audiology, ophthalmology and dermatology
- cardiology, neurology, major dental
- Cardiology, OBGYN, any surgical procedures, MRI, Women's Physical Therapy
- catastrophic illness/MRI's/Cancer treatment, etc.
- child birth
- Child Birth

- Child birth
- Child birth, Pediatric dental work
- Child Birth. Dental.
- Childbirth
- Childbirth and surgery
- Childbirth, children's dental
- Children's dental work, diabetes/ nutrition children, delivery of children
- Clinic
- Colonoscopy
- Colonoscopy
- colonoscopy currently, eye care, ortho
- Colonoscopy, surgeries
- dental
- Dental
- Dental
- Dental
- dental
- Dental
- Dental
- dental
- Dental
- Dental
- Dental
- Dental
- Dental
- Dental
- Dental
- Dental
- Dental and optometry
- Dental and surgeries
- Dental, any sort of surgery, babies, MRI, etc.
- Dental, breast biopsy
- Dental, broken bones, OBGYN
- Dental, Delivery of babies, Heart, Colonoscopy, check for vein blockage blo
- Dental, dermatology
- dental, eye exams, heart
- Dental, eye, gynecology
- dental, eye, other specialists
- dental, eyes
- Dental, MRI
- dental, orthodontics, sometimes eyecare
- dental, vision, surgery
- Dental, Vision, well woman, CDL exam -cost here is extremely high
- dentist

- dentist
- Dentist and physician
- Dentistry, eye care
- Dermatologists
- dermatology
- Dermatology
- Dermatology
- Dermatology, Allergy testing, birth
- Dermatology, Arthritis, Podiatry
- dermatology, dental, ophthalmology
- Dermatology, Dental, Vision
- Dermatology, podiatry, Orthopedics, Dentist, Orthodontist, Hearing, Gynecology
- Dialysis, to give birth, MRI, Eye X-ray, Cyst treatment, Cancer treatments
- ears, nose, throat, integrated massage/chiro therapy, gastro, eyes, well woman annual exams
- emergency needs
- EMERGENCYS
- Everything
- Everything
- Everything
- Everything
- Everything
- Everything
- everything but public health
- Everything except checkups
- Everything except regular checkups
- Everything significant, local healthcare is expensive
- Everything. WMC is a band aid station and the clinic accommodates basic needs and can make referrals sometimes. I have been to any healthcare locations in Wrangell for four years because I didn't feel I would get adequate service and it wasn't worth the cost with no health insurance. Now that I have health insurance I don't go because I don't feel they can help me, and nothing stays private.
- eye
- eye and dental
- Eye appointment
- Eye care
- Eye care and mental health
- Eye Care and surgery like dental & feet
- eye care, arthritis care, surgery, colonoscopy
- eye care, dental surgery, allergy testing
- eye care, diabetes care, surgery's, oncology
- Eye care, gynecological, anything more complex than what a GP can handle.

- Eye care.
- Eye doctor, pregnancies/giving birth, moat surgeries or specialized care, major dental work.
- eye doctor; monitoring heart health care; surgeries
- eye exam & sleep study
- eye exams
- Eye exams
- Eye exams
- Eye exams, child births
- eye exams, dental, colonoscopies, gynecology, mammograms
- Eye exams, labor and delivery, infant specialized care
- Eye exams, orthopedic, orthodontist
- Eye exams, specialists, dental
- eye surgery
- Eye, dental
- Eyecare
- eyecare
- Eyeglasses and health care
- Eyes
- Eyes glaucoma . Dental.
- Eyes, birth control
- Eyes, dermatologist, teeth,
- eyes, kidney, prostate, Parkinson's
- For all medical unless it's for a cold
- Gastrointestinal, specialty care, dental
- GI, MRI, Neuro/Botox, RH, Bone DEXA
- Glasses and ophthalmologist
- Go see specialty doctors in Anchorage
- Gynecologist appts
- Gynecology
- Had to leave to Mt. Edgecumbe to see my granddaughter being born.
- had to leave Wrangell for: operation on kidney, eye exams, cataracts both eyes, hand surgery, colonoscopy, watching spot in back of eye, heart ablation
- Have left for dental in the past
- Having a baby
- Having a child.
- Hearing aid and surgery
- Hearing, eye doctor, dentist
- Heart
- Heart and vascular surgery
- Heart issues, arthritis, knee replacement
- Heart, dental, dermatologists, cancer care

- I currently am healthy and have no need to travel at this time.
- I don't
- I don't leave town regularly for healthcare, but I did have to leave town to do an MRI.
- I get sent out of Wrangell for proper Diagnosis of symptoms because Wrangell doesn't have adequate facilities.
- I haven't had to yet
- I try to leave for dental, allergy-based appointments, anything serious regarding my infant
- I used to leave to see an orthodontist for Invisaligns.
- Idk what this is saying
- Injections, special dental,
- Internal
- Internal medicine/surgery's
- Invasive
- Just about everything
- Kids
- Lab/teeth/ mammogram /heart/ ears
- Lady issues
- Major surgeries, cancer screenings, child delivery(birth).
- Major Surgery
- Mammogram, colonoscopy, checkups, dermatology
- Medical dental
- Medical, eye care
- Medical. Dental. Eye care.
- Medically complex child needs, dental, GI, Rheumatology, OB.
- most
- Most of the time we're shipped out if we have anything more than needing stitches.
- Most of them
- Most recent was a root canal. Cardiologist.
- Most things
- Mostly for New vision of glasses
- MRI
- MRI
- MRI
- MRI
- MRI
- MRI
- MRI
- MRI
- MRI dermatology
- MRI or to see a specialist
- MRI, cardiology, orthopedic surgery, colonoscopy

- MRI, CAT Scan, Allergy Testing
- MRI, CT
- MRI, surgeries, any specialists. Gynecology, Colonoscopy and more, urology, bone
- MRI, Urologist, Cardiologist, Surgery, and more
- MRI; dental; OBGYN
- MRI's, Cardiac testing
- MRIs, surgeries
- N/A
- N/A
- N/A
- N/A
- Na
- Na
- Naturopathic, specialties
- needed to go to Anchorage for my shoulder surgery and see a specialist for my right knee when ran over by a vehicle
- needed to go to Anchorage for my shoulder surgery and see a specialist for my right knee when ran over by a vehicle
- Nephrology, cardiology, retina specialist for macular degeneration
- Neuro ophthalmology, OBGYN
- neurological
- Neurological, OBGYN, and surgical care as needed
- Neurologist
- Neurologist, MRI
- Neurology
- Neurology, dental, surgeries, nutrition, MRI
- Neurosurgeon
- none
- none
- none
- none
- none
- None
- none
- none
- none @ this time
- None at this time
- None at this time
- None at this time
- None now but in the past all surgeries
- None right know
- none right now

- None right now
- None right now.
- none yet
- None yet
- None yet. New to Wrangell. But a lot of online prescription orders that can end up getting very expensive.
- Not any so far.
- Nothing
- Nothing
- OBGYN orthopedic
- Ob with fiancée
- OB-GYN & Eye
- OB, eyes
- OB, surgical, pediatric
- On/gym, cardiology, naturopathic
- Ophthalmologist
- Ophthalmologist, surgery, pregnancy, rheumatologist,
- Ophthalmologist
- Optometry, Dental
- Oral surgery
- oral surgery
- oral surgery
- Orthodontics, optometry, ENT,
- Orthopedic - back problems
- orthopedic needs
- Orthopedic. Bad back issues
- Orthopedics
- pain
- Pediatric eye care, MRI
- Pediatric procedures
- Physicals (VA). Dental
- PKU procedures
- Pregnancy, surgery, eye care.
- Pregnancy/delivery
- Prenatal care and birth!
- prenatal, dental
- pretty much everything, from dental and eye, to other.
- Prosthetic adjustment and neurological exams
- Pulmonary and orthopedics
- Radiology
- Radiation, MRI, cancer care
- Reproductive health, skin care

- Retinology cardiology ophthalmology
- Retinology for eye care, sleep apnea
- Rheumatology
- Root canals, surgery
- Scans as surgery
- Sleep Apnea
- Sleep studies, surgeries, specialized care.
- specialist
- Specialist like Asthma care, hearing, and all surgery.
- specialists
- Specialists
- Specialized care or physicians not available here. Stroke follow up, female anatomy procedures, biopsies.
- Specialty clinics
- surgeries
- surgeries and naturopathic
- surgeries,
- surgeries, specific shots, specialized care
- surgery
- surgery
- surgery
- Surgery
- Surgery
- Surgery
- Surgery
- Surgery
- Surgery , urology, orthopedic, pediatric dentist
- surgery and other specialists
- surgery on broken toe
- surgery or a root canal
- Surgery Ortho care eye care
- Surgery,
- Surgery, child birth, children's dental, MRI
- Surgery, dermatology, gastroenterology
- surgery, hearing test
- Surgery, mammograms
- surgery, MRI
- surgery, MRI
- surgery, MRI
- Surgery, MRI.
- Surgery. Dental - several bad experiences with current dentist
- Surgical, back issues, cancer issues

- Surgical, eye care
- TCM acupuncture/herbal treatment
- Teeth for children. Having babies in home care support for elders/ seniors
- Those involving cardiac care
- thyroid disease
- to see specialists
- Upper and lower GI
- Veterans' health care
- vision
- Vision, GI
- Vision, pregnancy, and some dental
- Vision. Dental. Veinous.
- Wellness check ups
- wisdom teeth
- Wisdom tooth removal, tonsillectomy, ENT referral, MRI
- Women's Healthcare
- Women's specialist
- X Ray, MRI
- Yearly cardiology and neurology appointments

Which Types of Health Care Specialists Would you Most Like to see in Wrangell?

- A sleep specialist, and Naturopathic Doctor
- A wholistic female doctor specializing in female needs
- Ability to safely birth your child in Wrangell
- Additional dental specialists.
- affordable ones
- All
- All
- All
- All
- All kinds even if it's just for a couple weeks randomly
- All that do visits now
- All the above
- Allergist
- allergists
- Allergists, OBGYN, urologist
- Allergy
- Allergy specialists
- Allergy. Ear nose throat
- alternative modalities of integrated health
- An eye doctor
- Anesthesiologist
- Anesthesiologists for schedules minor surgery's with different specialty doctors.
- Anesthesiologists so we can have our children at home again!
- Any and all
- Any and all that can. We have all ages, genders and medical needs.
- Any and all.
- Arthritis specialists
- arthritis, psoriasis, ear
- Audiologists/vision
- Babies being born in Wrangell
- Baby
- Baby birthing dr.
- Baby doctor
- baby nursery

- Back Doctor
- Back specialist
- Back, neck
- Behavioral health. Psychologists and psychiatrists or at least a psychiatric nurse.
- Better dentist
- better massage/chiro, foot care, diabetes specialists, issues for elderly
- birthing, non-emergency surgical procedures. even if on a visiting doctor schedule
- Birthing Center
- Births
- Bone and head injury patients
- Bone and head injury patients
- cancer
- Cancer
- Cancer care
- Cardiac as well as doctors able to deliver babies
- Cardiologist
- Cardiologist
- Cardiologist
- cardiologist
- Cardiologist, Dental specialist, Cancer
- Cardiologist, dermatology, oncology
- Cardiologist, Optometrist
- Cardiologists
- Cardiologists
- cardiology
- cardiology
- Cardiology
- Cardiology
- Cardiology, Dermatology, ENT, Allergist
- Cardiology, ENT, Orthopedist, Dermatologist, podiatrist, plus
- Cardiology, gastroenterology, dermatology
- Cardiology, mental health
- Cardiology, orthopedic, urology
- Child birth
- Child dentist with anesthesia and be able to have birthing classes. And natural births in Wrangell
- childbirth
- Childbirth, nutrition support, internist, cardiac care
- chiropractic
- Chiropractor
- Clinic
- Colin , heart, Dentist,

- Councilors, mental health professionals, therapists, etc.
- Dental
- Dental
- Dental
- Dental
- Dental
- Dental, Optometrist, OBGYN
- Dental, Vision
- dental, eye
- dentist
- Dentist
- Dentist
- Dentist
- dentist, OBGYN
- Dentistry
- Dentists
- Derm heart podiatrist
- Dermatologist
- Dermatologist
- Dermatologist cardiologist
- Dermatologist is needed
- Dermatologist, Ophthalmologist, Gastroenterologist
- dermatologist, cardiologist
- Dermatologist. more qualified mental health and family doctors
- Dermatologist/ OBGYN
- dermatologists, neurologists, oncologists
- Dermatology
- Dermatology
- Dermatology
- Dermatology
- Dermatology, Dental, Vision
- Dermatology, GI
- dermatology, oncologist
- Dermatology, podiatry, Orthopedics, Dentist, Orthodontist, Hearing, Gynecology
- Diabetes, Oncology
- Diabetic
- diabetic
- Diabetes
- Dietician
- Doctors
- Doctors so Wrangell women can have babies here in Wrangell.
- Doctors that can work with children

- Doctors, dentist
- Drs specializes for seniors that have dementia/ Alzheimer's .
- Drug and rehabilitation specialist
- Drug use or eye care
- Ear nose throat
- Ear Specialists
- Ears, nose and throat. Being able to deliver children here, not leaving town just to have your baby.
- Emergency room doctors not family doctors there is a huge difference
- emergency, specialty health care services
- Endocrinologist
- ENT
- ENT doctor or cardiologist
- ENT, dermatology, should be ok
- ENT, GYN, Ophthalmology, allergist, ortho
- ENT, orthodontics, optometry.
- ENTs
- ENTs
- Everything
- Expanded dental services
- eye
- Eye
- eye care
- eye care
- eye care
- Eye care
- Eye Care
- Eye care and better mental health
- Eye care specialist.
- Eye care.
- Eye care. Dental care.
- eye doctor
- Eye doctor
- eye doctor
- Eye doctor
- Eye Doctor
- Eye doctor
- Eye doctor, dentist
- Eye doctor, dentist, pediatrician
- eye doctor, full-time vet, orthodontist
- Eye Doctor/Women's Doctor
- Eye doctors

- eye guy
- eye specialist
- Eye, dental
- Eye, Ear (hearing)
- Eye, female yearly, heart
- eye, skin
- Eye, women's, psychiatrist
- Eyecare
- eyes and dental
- Eyes, children & OB
- feet
- Foot
- Foot doctor
- full time general practitioner
- Gastroenteritis
- Gastrointestinal, neurologists
- General surgeon
- gerontologist
- GI, Neuro, RH, Ophthalmology, Podiatry, Pediatric
- Gynecologic and pediatrician
- Gynecologist
- Gynecologist
- Gynecologist, mental health professionals
- Gynecology, ophthalmology, MRI services
- Gyno, orthopedic, cardio
- Health education for adults and youth
- Hearing, eye doctor and dentist (denture specialist)
- Heart and neonatal
- Heart Doctor
- Heart, endocrinology, orthopedic
- Heart, optometry,
- I believe beneficial staff to bring to Wrangell would be a General Surgeon for minor surgeries, and a physician to bring back the capabilities of Child Birth to the Island.
- I see a need for senior care specialists
- I would like to see basic diagnostic imaging, such as MRI, located in Wrangell.
- If you need help you shouldn't have to pay high dollars just to walk through the door on emergency when you need help.
- Internal medicine doctor
- Internal Medicine, endocrinologist, pediatrician
- Internal, dermatology
- Internist or Endocrinologist
- It would be nice if people could have babies here.

- Kidney specialist
- Kidney Specialists, MRI Specialist, pediatrician
- Labor and delivery, Anesthesiologist
- Lymphedema physical therapist
- Medical doctors and OB/GYN
- mental health
- Mental health
- Mental Health
- Mental Health and Addiction specialists
- Mental health and group therapy , naturopathy
- Mental health counselors
- Mental health, gynecology, cardiologist
- Mental health, substance abuse specialist
- Mental health, vision
- More
- More dental, OBGYN, better mental health care, eye care
- More dentists
- more doctors
- more family doctors
- More frequent orthopedic visits
- More itinerant specialists
- More Nurse Practitioners.; more general doctors
- More options for speech and occupational therapies. Currently, the ones we have don't specialize in autism.
- more prenatal care and dentists
- More reproductive health options
- More services at the hospital/clinic, eye doctor
- MRI , orthopedics, pulmonary, heart
- MRI/imaging machine
- n/a
- Na
- Naturopathic Doctor ACTUAL WHOLE HEALTH FOOD NUTRITIONALIST
- Naturopathic, psychiatric
- Nephrologist. Cardiologist. Retina specialist
- neurologist
- Neurologist
- Neurologist, Gastroenterologist,
- Neurosurgeon
- none
- none
- Not having to leave to have a baby would be amazing!
- Not sure but need to advertise when they come.

- Not sure we need multiple!!!
- OB
- Ob
- OB & Eye
- OB and pediatric
- OBGYN
- OB GYN ENT ORTHOPEDIC
- OB services
- OB/GYN
- OB/GYN, CARDIOLOGISTS
- OBGYN
- OBGYN
- OBGYN
- OBGYN
- OBGYN
- OBGYN
- OBGYN
- OBGYN
- OBGYN
- OBGYN - Deliver babies! Psychiatry
- OBGYN for delivery baby's again
- OBGYN, Allergist, Pediatrician, Orthodontics
- OBGYN, dietician, orthopedic
- OBGYN, More eye doctors (more frequently)
- OBGYN, surgical procedures, deliveries
- OBGYN; delivering babies;
- obstetrician
- Obstetrician. It would be nice to have babies born here again. I also think a surgeon would be beneficial.
- Obstetrics, allergies, another dental hygienist
- Obstruction that delivers baby
- OBGYN
- Older care so we don't have to travel
- oncology, orthopedics, internal medicine
- Ophthalmologist
- Ophthalmologist
- Ophthalmologist
- Ophthalmologist and orthodontist
- Ophthalmologist/eye doctor
- Ophthalmology
- Ophthalmology, surgical, orthopedic, mental health
- Ophthalmology Cardiology
- ophthalmologist & oncologist

- ophthalmologist, OBGYN
- Ophthalmologists, allergist
- Ophthalmologist
- Optometrist
- Optometrist
- Optometrists and oncologists
- Optometry
- Optometry, cardiology, ortho.
- optometry, naturopath, surgeons
- Oral surgeon
- Orthopedic Care.
- Orthodontist
- Orthodontist
- orthodontist, surgeon
- Orthopedic
- Orthopedic
- orthopedic specialist
- Orthopedic, pediatric. Women's health
- Orthopedic, urology
- Otolaryngologist
- Pain management
- Pediatric
- Pediatric doctors or so we can have babies in Wrangell.
- pediatrician
- Pediatrician
- Pediatrician, OBGYN.
- Pediatricians, eye doctor
- Pediatrics without the threat of a suit.
- PKU
- Podiatrist
- Podiatrist, hearing and vision.
- prenatal care
- Prenatal specialist, women's health hormone specialist, pediatrician, chronic pain specialist
- Prostetist
- Psychiatrist
- Psychiatrist
- Psychiatrist, heart, pulmonary, orthopedic
- psychologists
- Psychologists

- Pulmonary doctors because there are a lot of people that have lung trouble here and many of these folks could suffer a lot less if they had been treated for their lung disease a lot earlier. Also, a doctor with lots of knowledge on diabetes.
- qualified doctors
- Rheumatology, gynecologist, psychiatry
- SART trained staff; ability to deliver babies
- search orthodontist, more consistent eye doctor, more choices for females' doctors
- sedation, pediatrics,
- See answers in question 4
- Skin, ENT, Gynecology
- Someone competent
- Someone so they can deliver babies here again.
- Someone to deliver Babies
- Specialists in Aging care
- specialists orthopedic
- specialty dental care
- Sports physical therapists.
- Surgeon
- surgeons
- surgeons
- Surgery, eye care, specialists
- TCM acupuncturist/herbalist
- Trauma unit
- Traumatic brain injury
- Triage
- unsure
- Unsure
- Unsure
- Unsure
- urologist
- Urology, oncology
- vision
- Vision
- Vision & Dental
- vision and expanded dental
- Vision, endocrinology
- We can't support full time so visiting is very nice, if they could just perform their practice while they visited would be great instead of making us travel after they consult.
- We need an MRI machine
- Women having babies
- women's health care

- Women's health
- Would like to see more emergency care and not have to be medevaced out of town.

Describe Your Thoughts on the Transition to SEARHC-Run Healthcare in Wrangell.

- Any medical is a plus in Wrangell
- Appears good.
- As far as I can tell it has been pretty good.
- As long as it is a community-based mentality
- Awesome
- awesome
- Better quality of services
- Bumpy but much needed
- challenging
- Change is hard for folks. Just got to smile and remind them that this could be good.
- Concern that non-natives will not be treated equally
- Cool
- Could be good
- Definitely needed
- don't have any - guess it's good!
- Excellent healthcare now & more courteous to elders and disabled
- Elder support services
- Excellent
- excellent
- excellent
- Excellent
- excellent Wonderful opportunity for growth and education
- excellent - no complaints, all positive
- Excellent move for the community; bring back the ability to have babies locally
- excellent transition
- Excellent.
- Excited
- Excited for increased health professionals located in Wrangell
- Excited.
- Extremely happy
- fairly smooth so far
- Fearful they will have a corner on the market, hiking the cost of health care and making demands on procedures patients do not think are necessary.
- finally

- Fine
- Fine
- For the hospital in Wrangell, it was the only option for the facility to remain open. I remain optimistic about where it will lead us.
- Fortunate!
- glad it's happening now
- Glad search is taking over
- going ok so far
- Going smoothly
- Going surprisingly smoothly
- Going to take some time to get used to it.
- Going well. Continue to work out kinks in transition between small operations/ management to larger/distant/off-site management.
- Good
- good
- good
- good
- Good
- Good
- Good
- Good
- Good
- Good
- Good
- Good
- Good for the community
- Good I guess
- Good move
- Good move
- Good so far
- Good, but it is still very difficult to get in timely with your primary physician
- Grateful
- great
- Great
- Great
- Great
- great
- Great
- Great
- Great
- Great
- great
- great

- great
- Great cant wait to see where is goes
- Great for our community
- great idea
- Great improvement
- Great Mo problems
- Great providers. Quality service. Poor billing.
- Great, hope it keeps going smoothly and fixes the problems with the hospital and LTC at the hospital.
- Great, our hospital has needed an upgrade for years. Providing more jobs to locals.
- Great!
- great!
- Great!
- Great!
- Great!
- Great!
- Great! Looking forward to new hospital
- Happy to see it.
- Happy we are able to still have a hospital!
- Hard to get someone to answer phone in clinic since SEARHC stepped in not so good.
- Have not really noticed much yet.
- Haven't formulated any yet
- Haven't had much experience yet
- Haven't seen any real transition yet.
- Helped our economy
- Hope it works!
- Hopeful that healthcare will be run better economically and professionally and that there might be more specialty healthcare options.
- Hopefully we will have better communication between hospital, clinic and pharmacy. Also hopefully bringing more options to the community.
- Hopefully will help and simplify medical care
- Hopefully will help and simplify medical care
- Hoping they will bring back birthing in Wrangell
- Hoping we can get many higher levels of specialists in Wrangell with new hospital like being able to have children.
- I am excited to see SEARHC come in and start to offer more healthcare opportunities for this community. I see a lot of good in our future.
- I am hoping it will get better. We have a good hospital. It is the high insurance that gets you. We are lucky to have such good doctors and staff. The big hospitals can keep up with high insurance. The smaller hospitals with less people just can't keep up.

- I am looking forward to the changes.
- I am optimistic that we have access to more services.
- I am pleased with the pace and scope of healthcare. Somewhat afraid of losing our history of healthcare
- I am very grateful but think SEARHC should cut more from AICS reputation and the way they do things. To many of the old workers are still dragging the health care and attention to people back from what it should be.
- I am very pleased!!! I wish there were more opportunities for services for special needs children.
- I am very pleased.
- I approve of the transition and think it is a benefit to our community
- I believe and hope it will be good
- I believe it will be beneficial to the community as well as create an addition center of care for surrounding communities.
- I do not have any experiences yet, except the clinic office seems unorganized when trying to make, keep, and execute appointments, and process paperwork.
- I don't have an opinion.
- I don't see it being much better or worse, honestly, I was hoping for more.
- I don't know too much about it
- I feel even though I have great insurance, I still cannot afford the cost of services. It is more native focused and it's so expensive to travel out of town for services.
- I feel is great and better serves our Community's needs.
- I feel it is good for the community
- I feel the SEARHC should be more proactive in letting the community know what they currently offer and how they plan to expand. Also, we need at least a month's notice for special programs that are offered. You have had low attendance because of a lack of advertising and short notice. Advertising: Talk on the Rock, Bulletin Boards around town, community calendar, Facebook, e-mail. Perhaps you need a promotions employee.
- I have been pleased. I do not use healthcare often but when I need it, it's always a challenge to get in to see someone.
- I have had no problems with ANMC. All medical staff very sufficient, pleasant & helpful, so with this big transition to Wrangell, I think they will do a good job.
- I have not noticed much change yet
- I haven't noticed a difference
- I hope that the scope of services provided by the hospital increased.
- I like how we will be a part of SEARHC, but I am worried an out how their billing will work with low income families
- I like it
- I love it. I love the focus on customer service and bedside manner.
- I see improved services and facilities

- I support this decision—I think SEARHC has the ability to prioritize needs but will only be successful by not succumbing to small town politics
- I think it could be a good change
- I think it fantastic
- I think it has gone well
- I think it is going to be a great addition to Wrangell
- I think it is good. But they are hiring people not qualified for positions in travel, secretarial and medical records
- I think it is wonderful, but I would like to see more local hires.
- I think it saved local healthcare with is becoming more challenging every year
- I think it was a good decision
- I think it was a great decision
- I think it was the best decision for this town. It is going to be a positive thing for Wrangell. Something we have needed for quite some time.
- I think it will be a good thing!
- I think it will be a great opportunity for Wrangell to access more services
- I think it will be beneficial to our community.
- I think it will be good, but we have growing pains.
- I think it will be great for the community. All the people seem really nice. It creates more jobs for the community also.
- I think it's better. But the need to honor previous commitments that were in place regarding medical care.
- I think it's going ok so far
- I think it's great.
- I think it's great. Larger organization can offer more options for the hospital. Would be nice to strengthen seniors long term care options and offer basic eye doctor clinic.
- I think it's the best thing that could have happened for the Wrangell medical center
- I think it's awesome they took over
- I think it's awesome!
- I think it's been a great improvement and the hospital will be a great addition and provide better care for the residents of Wrangell.
- I think it's been good, just need more visiting specialists
- I think it's gone smoothly, and they have done a great job about giving residents information
- I think it's great
- I think it's great
- I think it's great!
- I think it's great. SEARHC will help with the needs of town. Have more money for the town's needs. Also, they have a ton of specialists
- I think it's the best thing to happen to Wrangell! It's expanding our healthcare!
- I think it's great

- I think it's great. I would like to see cost of some things re- evaluated as they are triple or more the cost here than elsewhere such as a basic CDL exam- was cheaper before SEARHC took over
- I think SEARHC is going to do well here if things continue the way they have been going.
- I think SEARHC taking over AICS has been a good change. They are working to create more opportunities in Wrangell for people to be seen without having to leave the island. I think more good change will come from this, especially with the new hospital coming soon.
- I think the increased resources and sustainability overall has been great,
- I think this is a positive change for the community.
- I think we have an opportunity for major growth and access to services that would have completely gone away
- I wish their policy didn't use up PTO hours while getting paid from workman's comp.
- I wish you had a computer system that didn't require the same information every time when checking in for an appointment.
- I would like to do away with all traveling doctors and nurses. I currently don't have a doctor in Wrangell, and I've been here for years. My husband doesn't have a doctor he can see for VA locally. Both of us are in good health but should have a local doctor we should be able to see on an occasional basis.
- I'm excited for general upgrades in the hospital
- I'm not sure
- I'm happy
- I'm not sure, it hasn't been bad.
- I'm very pleased that SEARHC has taken over.
- If they offer more services to us, then this transition is awesome
- If we can get more of a variety specialist doctors in here that will make it all worthwhile.
- Improved health care.
- In complete support
- In the past I always felt I got the best care. It's been a tough transition, but I think it will be good in the end. Outlook positive!
- Irritating.
- It appears to be off to a hands on the ground start. Good training and good policies
- It can only get better
- it has been a good transition, but I was expecting to have more services available and more often.
- It has been awesome! Has already given us more options
- It has been great!
- It has been well organized and well done for existing employees
- It has gone well, as far as I know,

- It has had its benefits, but upper management is still an absolute nightmare to deal with
- It is awesome!
- It is good for Wrangell
- It is good, we need a community, more people with jobs is always good.
- It is the best thing to happen to Wrangell.
- It is too early to have a full idea of how it is working. Although the changes so far have been a great improvement.
- It seemed seamless with the clinic and existing hospital so far. Good job.
- It seems like all I have heard from SEARHC employees is that it's a nightmare. It hasn't been a hard transition in my opinion, and I was even treated better at the dentist office and clinic
- It seems like it is going really well
- It seems ok. But I feel like the quality of healthcare isn't changed much. If you don't have native health insurance, it is very expensive to have to travel and most insurance do not pay for that cost.
- It seems really good so far
- It sounds nice.
- It was much needed
- It was necessary. Excited for a new hospital building!
- It will be a great improvement
- It will provide more services to us.
- It's a good thing and I expect a much-improved system.
- It's a higher level of health care.
- It's been great but could be better. The construction of the new hospital feels like the crew are really taking their time when we need it now.
- It's good
- It's improving the town and offering more services to the locals.
- It's a great idea.
- It's AMAZING
- It's an improvement however it's a bare beginning
- It's appropriate
- It's been as expected. It's a new system which requires everyone's patience as the staff adjust to the programs
- It's been extremely positive
- It's been pretty seamless
- It's fine, still can't get an appointment timely though
- It's great!
- It's ok
- It's seems like a really good thing
- It's too early to answer this one.
- It's a good move for the community

- It's been good
- It's been great! They are providing more opportunities for locals and providing more care.
- It's getting better, but we need more access to specialists
- its good
- Its ok
- Less personal care for people than there used to be.
- Like it
- Lost the community feel of the hospital. No one really cares anymore.
- Love it!
- luckily haven't had much experience with healthcare since transition, but seems to be transitioning smoothly
- More communication
- More financial support for tribal members
- n/a
- N/A
- N/A
- n/a
- N/A
- Na
- Neutral at this time.
- no comment good/bad
- no opinion
- no opinion
- No thoughts. I'm unsure of the changes that brought around. The fact that we're getting a new hospital is awesome however I do not know if that hospital will be larger/ accommodate more patients/ or if SEARHC will welcome more specialized providers to work there.
- Not enough knowledge to comment
- Not involved enough to make a comment.
- not positive thoughts because of increase cost of services
- Not sure as of yet
- Not sure yet
- not sure yet
- Not sure yet
- Not sure yet, glad of the new hospital
- Not sure yet. Seems like a great idea that we did change over
- Not sure yet...
- Ok
- OK
- Only visit to dentist so far. No experience with Search in Wrangell yet

- Pain medicine that is needed is too hard to get. Especially for people who don't abuse it.
- Painful. Some corporate methods don't mesh with small communities. The ability to get some records online is nice. But, for the most part, some of the policies aren't what's best for the patient.
- People outside of our community are making the decisions. SEARHC is looking to the bottom line, not necessarily what is best for us. Community members that are not Alaska natives are not represented on the advisory board. We should have a say also.
- Poor
- Positive
- Positive move for Wrangell, helps with diversification of services.
- positive
- PRETENSIOUS
- Probably one of the best things that could happen to this island
- Problems with pharmacy, referrals and sending medical records between clinic and hospital and sending records out of Wrangell
- Rough on Wrangell Employees
- Search will be amazing here in Wrangell
- SEARHC has really been helping the community and are trying to improve with everything.
- SEARHC is amazing
- SEARHC is doing a really good job so far
- SEARHC needs to be able to provide affordable healthcare to all and hire individuals who actually know what they are supposed to. Wrangell has many healthcare professionals who do not provide accurate diagnosis, wasting time and money, and decreasing their patient's confidence in going to the doctor.
- Seem good
- seems good idea
- seems good idea
- Seems good so far
- Seems like a good transition, all in all. I look forward to seeing the new hospital.
- seems like it resulted in improved quality but also increased costs.
- Seems ok
- Seems promising
- Seems smooth
- Seems to be a good transition and increases benefit to the community on many levels. Looking forward to seeing the fruit of this transition to SEARHC
- Seems to be an improvement.
- Seems to be fine.
- Seems to be going well
- seems to be going well
- Seems to be going well; sometimes hard to reach people by phone

- Seems to be going well. No issues with my health care.
- Seems to be working very well
- Seems to be working well.
- should be great
- Should have taken over before Wrangell threw away millions of dollars.
- Slow process, but we're getting there.
- So far, I have no complaints.
- So far, I love it.
- So far, I'm pleased with the improvements
- So far, it's been fine!
- so far ok
- So far so good
- so far so good
- so far so good
- So far so good
- So far so good
- So far so good
- so far so good
- So far so good no complaints
- So far so good. SEARHC needs more communication to public
- So, someone has to run it. It seems you attracted a couple of good doctors since you took over. It is a little better than it was before. The hospital is great. Spent a bit in it in March 2019 before I was Medevac'd to Seattle. good doctors in the process.
- Some bumps with billing but otherwise it's been smooth.
- Super great for town
- Thankful
- Thankful for their doing so. Like the role they have taken on.
- The billing has gotten easier, although I would like to be able to pay my dental, clinic & hospital bill in one place.
- The city shouldn't be in the healthcare business, so then taking over is a Plus in that regard.
- The transition may have saved our community
- The transition needed to happen. The CBW did not have the financial means to support. In the grand scheme for me, I cannot afford healthcare due to being non-native. I earn just enough not to qualify for any discount under the SEARHC sliding scale. Healthcare benefits have not improved for me, but I am still glad we are getting a new hospital.
- The transition of Search to Wrangell has helped the community a ton
- There are more people in Wrangell than seniors, Natives and druggies. We need more services not increased focus on these communities. People should not have to pay their own way to Ketchikan for an MRI simply because they aren't on govt programs.

- There have been bumps in the road in implementing new systems and some of the new systems need to be improved. I am most appreciative of SEARHC stepping up to provide a new hospital and taking over the old WMC. I am overall very positive having SEARHC-running healthcare in Wrangell.
- There is less prejudice from Dr's, nurses, CNA's & office staff, more supervisors to talk to about poor treatment
- They have the funding
- Think it's going great
- think it's a good thing
- This is terrific for the entire community.
- This transition was the best idea. So good for our community.
- Too much disconnect between offices.
- Too soon to say
- Unknown
- Unsure
- Unsure
- Unsure how the transition has gone so far but if Wrangell is able to get more specialists to treat and diagnose Alzheimer's, prostate, colons, breast, lung cancers without having the need to travel down south. Also, mental health care and better long-term care facilities to meet the needs of Alzheimer's and dementia patients.
- Very advantageous for Wrangell
- Very excited about the changes and new opportunities for our community
- Very excited for more healthcare opportunities
- Very glad it's finally happening
- very good
- Very good
- Very happy
- Very Happy
- Very positive
- Very positive
- Very positive
- Very positive and necessary step
- Very smooth!
- Very supportive
- We are a small island that is like a big family. SEARHC has/is creating job opportunities for our little island and I am happy to have them help us change for the better.
- We've needed this change for a long time.
- Wonderful
- Wonderful
- WONDERFUL
- WONDERFULL!

- Work in progress
- Would like it to keep the friendly care that's been here for many years.
- Your billing system is horrible.
- 50/50 honestly. I feel like SEARHC cares more about money than actually helping the patients
- 7/19/19 very smooth

How would you describe the **most critical need or issue** in Wrangell?

- A big issue I see is the lack of property for sale In Wrangell
- a clean steady water source paired with backup hydro-power to offset having to use high priced diesel during Tyee shutdowns.
- A lack of active, good leadership in business and organizational entities. We need good leaders to create positive work environments, retain staff, and help them grow and develop.
- A strategic plan for the future.
- A working water system and road repairs.
- Access in and out of Wrangell and cost of freight.
- Addition, alcohol and drugs
- Address aging buildings and water issues
- Aging infrastructure and meth use/ dealing not being addressed by police department.
- Alternative power sources, water sources, maybe Virginia lake, a seine net float would be the thing I would like most.
- Assuring safe homes for all children, drug and alcohol abuse, employment, WATER
- Available housing! We need available property to buy and build at a reasonable cost! Competitive paying jobs to be able to live in a high cost community. There is no expansion without housing and decent jobs to be able to support a family in this community.
- Awareness of the crisis the world is in. Polluting ourselves out of existence. We need a way to recycle and more public awareness on wastefulness of EVERYTHING. We in general have become a “package using throw away” society. And that must stop! Reuse, refresh or just don’t use! Don't take more than you can use.
- Behavioral health. Activities for our kids. Small group tourism and intentionally cultural activities/ tours for them. Housing development for all.
- being able to deliver babies in Wrangell
- Being able to recycle. Making sure the fairy keeps working.
- Better municipal management
- Build more hiking trails, move freight from mid-town, advance cultural opportunities for tour development.
- Caring for elderly, Health Care, Whole Foods Education, substance abuse, nothing after 8PM for community people to do IF you don't enjoy Bar atmosphere
- Childcare

- Childcare and housing
- City fresh water supply.
- City infrastructure maintenance
- City infrastructure. Upgrade water and sewer as well as power.
- Clean drinking water/household water
- Clean water and grow clear food
- Clean, plentiful water
- Climate change and its related effects - drought, water shortage, energy shortage, impact on subsistence and fisheries resources, etc.
- Climate Change effecting our food local harvest of fish and wildlife, and our drinking water supply
- Community activities for youth and families
- Correct the trend to more away from cultural values
- create a "future" oriented outlook.
- Creating jobs that actually pay well; enough to live on. Getting drugs out if Wrangell. Making the police department more accountable and stop playing favorites and letting crimes slide because their buddies or related to the criminal. Having more options for special needs children and adults. Like Special Olympics. Currently most special needs children can't compete in sports or activities without having a helper, etc. Wrangell schools are corrupt. I've lived in different states and in many different cities and having dealt with schools since my oldest started school in 1997 I have to say this is the worst administration and school board I have ever witnessed. Not that anything can be changed just wanted to vent.
- Critical needs that I would note are water conversation, specialty clinics like optometry, housing, and those notes in survey.
- Currently our water situation needs to be addressed. Also, ways to get to Wrangell and places to stay! There are people that want to come but cutbacks to the Ferry have made it difficult.
- Declining ferry travel, recycling and removal. Jobs, food service family, youth and infant.
- Develop community programs and resources to attract more tourists without changing the character and atmosphere in town.
- Develop music. Camps. Events. Festivals.
- Developing economic opportunities outside the tourist industry in Wrangell so that people, especially youth want to live here.
- Different source for electricity and also drinking water plant upgrades
- Drinking water
- Drought
- Drought
- Drought seems to be the most pressing issue right now d/t climate change. A rainforested area repeatedly being caught in drought signals major concerns.
- Drug addicts

- Drug and alcohol addiction.
- Drug problem - meth
- Drug problems
- Drug rehabilitation and Mental Health services
- Drug usage and nothing seems to be getting done
- Drug use
- Drug use and related crimes. Police and judges need to do their jobs to protect the community and not turn a blind eye to the problem even if the individuals are of a favored family or group.
- Economic development and winter/year-round economic opportunities. Cost of shipping goods here.
- Economic development, protection of environment
- economic growth and water concerns
- Economic growth of healthy industry.
- Economic growth. Mental health & substance abuse programs needed.
- Economic opportunities
- economy and school system
- Economy need to develop the tourism; this would help a lot of other things.
- Educating our youth in order to work locally - marine services, fisheries, etc., so they don't have to move away - we are an aging community.
- education on how climate change is affecting Wrangell, AK
- Employment opportunities
- employment opportunities
- Finding and encouraging income streams for Wrangell as the State monies dry up.
- FISHERIES
- Fix our water problem.
- Fixing our water system instead of band-aid solutions like not having individuals wash their cars
- Fixing water issues
- Focus on energy/water related issues. Develop an alternative, clean energy. Continue to develop maritime focus (shipyards, services, marine storage).
- Front street revitalization. This is what the tourists see first.
- Fundamental utilities. Water and electricity. Providing for current needs and for the ability to attract future business and economic opportunities.
- Get rid of drugs
- Getting the community to unite so there is more community involvement in projects instead of a select few not only making decisions for all but people in the community don't feel like they have to participate because someone else will handle it.
- Getting traditional foods to all the elders and families that don't have the means to get it.
- Good drug & alcohol treatment facility.
- good survey. Health, food, economy, city/utilities, education are all critically important

- groceries too high and real-estate
- Having clean water and recycling. Too much gets tossed into the ocean
- Having to be on water restrictions and indoor air quality.
- Health care
- Health care increase, education increase, and child care needs increased
- Healthcare and jobs
- Healthcare access and high cost of living.
- Healthcare need better qualified medical professionals that are concerned about your health and not if you have drugs in your system
- Healthy water supplies upgrades
- Health care needs are my first priority as I have a child who has to travel often because they aren't available. It sometimes feels dangerous to live here when they are sick.
- Help for aging residents
- High cost of living
- Hospital/medical facilities, water availability due to drought, clean drinking water
- Housing
- Housing
- Housing
- Housing
- Housing
- Housing and Childcare
- Housing and jobs
- Housing and water filtration plant
- housing for seniors & care for seniors
- Housing is a huge issue
- Housing is a huge need! Childcare is a huge need! We also really need more things for children to do, especially during the school year!
- Housing is critical and the slumlords that do exist are rising the price of rentals and not taking care of the properties appropriately.
- Housing needs and to resolve our water/drought situation
- Housing, home repair, employment opportunities, need for people in the trade industries.
- Housing, infrastructure for growth, economic growth
- Housing, jobs, public transport
- Housing, things for kids/families to do without technology,
- housing, water, higher education/vocational needs locally, city roads/water delivery systems, recycling
- HOUSING!
- Housing. Affordable
- I am concerned mostly about things we can control, getting rid of single use plastics, recycling etc. I wish we had these types of things here. I know Petersburg has a recycling program, and I think it would be an easy enough thing to get going here.

- I am new here to this community. I have lived in Alaska for 11 years and live Wrangell so far.
- I believe a growing problem in the community is there isn't enough work for the amount of people who want to make Wrangell home.
- I believe housing and employment are critical issues in Wrangell.
- I believe that our water reservoir is the biggest issue that effects everyone and needs to be improved.
- I believe the most critical need in Wrangell would be more substance abuse programs and support
- I believe we need to get more jobs here for winter or year long. Many fisherman struggle and the industry is unpredictable so it would be nice to have something else that they could fall back on. I would not reduce subsistence fishing/hunting as many survive off of it.
- I feel like there are too many issues in Wrangell that come to mind. Tourism, I believe that if we could increase tourism it would help the family owned businesses. Recycling, making our oceans clean, teaching about keeping our oceans clean, protecting the salmon and the animals. Cultural teachings. Housing is important, I feel that there is not enough housing on this island for people. I would like to see more care for our elders on this island, such as workers going into the home to help them.
- I think mental health and substance abuse are two of the biggest obstacles to people in Wrangell who have great potential but do not have access to services that should be available to them. This is the root of so many other problems in society but is still just one aspect of a solution that will require multifaceted efforts.
- I think our deer populations are important
- I think our education system needs a lot of help and I believe our environment needs a lot of help as well.
- I with temperatures rising all over the country, I think we need to think about our water supply. Not just getting a new system figured out for clean drinking water at the water plant if we have a dry summer but also what our back up option is if the lake the runs our power goes low. We can just wait till a major water crisis.
- I would have to say economic development and retaining citizens through training in medical, maritime and other trade work related fields. This could be one of many great starts for economic development and retention of
- I would say housing is one if the bigger problems here there's almost no rentals here
- I would say a main I sure involves our water problems.
- I would say ensuring we have enough water is most critical I think recycling is a major concern of mine but not critical.
- I'm not sure
- Improved water filtration is a long-term project and is critical for safe drinking water and the economy.
- In dire need of more

- In my short time here, I'd say broadening economic options, growth and stability would benefit and strengthen Wrangell's people greatly. Finding better solutions for power/ energy, garbage cleanup, and water are fundamental to local growth and security. Too dependent and costly on others for these basic needs.
- Inadequate water supply and management of water. Need more supply and better mgt of the facility and system than the current group of employees.
- increase in drug use of youth prevention and education both need high priority
- Increased water/treatment/storage capacity
- Increasing and improving the water supply for the community.
- Increasing industry. This is a poor community. We need to bring in a way for this community to bring in more money.
- Infiltration of drugs and resulting crime
- Infrastructure
- Infrastructure - water, sewer & power poles
- Infrastructure, community pride and cleanliness ...
- Insist and help the City of Wrangell get back into the FEMA program so Veterans can purchase homes in Wrangell. Currently the VA Administration home loan programs will not loan in Wrangell because of this issue. Alaska has the highest number of Native veterans in the country. If any Veteran wants to move to Wrangell and buy a home, they cannot use their home Veteran benefits because Wrangell is not in the FEMA program. Wrangell opted out of the FEMA program sometime in the 1980s.
- it would be a tie between water access (safe/drinkable) An effective recycling program.
- Job opportunities, especially for youth. Training in trades.
- jobs
- jobs
- Jobs
- Jobs
- Jobs and environmental / our way of life balance
- jobs around maritime resource development
- Jobs for residents that pay enough to live and thrive on
- jobs, housing, medical care
- Keep it clean
- Keep Wrangell a safe, clean place people want to live with good medical, jobs and opportunities.
- Keeping our small town heart, but incorporate more medical
- keeping the king salmon population up.
- lack of access to services and high prices
- lack of available housing
- lack of education when it comes to medical
- Lack of licensed childcare
- Less police officers

- Local education/training/jobs that relate to community sustainability. Housing and mental health services are really needed. To work at building the local skills to meet these needs.
- Lower cost of food, fuel, and shipping costs. Keep our fish FOR ALASKANS.
- Making sure we have transportation in and out (ferry). Making sure there are post-secondary options for our students who are graduating.
- Medical needs, school needs, and senior needs
- medical,& housing.
- mental health and substance abuse issues lack of constructive activities for our youth
Re-entry programs--Job Training, Support groups
- Mental health services are lacking
- Mental health, drug abuse and lack of care for the Elders and Seniors.
- Meth abuse
- Meth abuse
- More cultural connected classes or camps for our youth. More connected health care
- More diverse employment for the younger generation. Bring in instructors and train people how to do different boat repairs, refrigeration hydraulics, electronics, marine engine repair.
- More employees for water plant and the water plant!
- More full-time jobs
- More help for seniors who want to live at home. Have more training
- More housing and help obtaining housing
- more housing for native families especially veteran native families
- More housing for our growing young parents and jobs
- More housing opportunities for elders and low-income families. Would love to see more specialty doctors come to town to treat patients. It would also be great to implement a recycling system. Oh, and also get the reservoir updated to cut back on water issues.
- More housing, more job opportunities, incentives for younger people to come back after schooling.
- More job options for caregivers
- More jobs
- more maintenance on streets
- More stuff for kids to do
- More things for people to do
- More things for toddler-preschool children to do, more things for youth, drug use in Wrangell (not including marijuana) is sky rocketing and there's no real help for struggling addicts on the island.
- More training in town for students and adults. Students could be getting up to 2 years' worth of college credit (graduating with an AA from HS) with more dual credit classes And, more in-depth VO-TECH classes to teach usable skills to students and

adults. As well as personal development and life skills - cooking, budgeting, how to balance a checkbook, how to fill out applications, basic home care and self-care, better coping mechanisms, and personal responsibility for feelings and attitudes no matter the circumstances, etc.

- more volunteers
- More year-round jobs. Affordable housing. Recycling.
- Move towards a tourism-based economy
- Na
- Native dancing language elder related programs
- Need new water source.
- need to obtain good quality and specialized healthcare throughout all stages of your life without having the need to travel
- new sidewalks - a sidewalk from the corner across from Rayme's to down by the canary
- New water filtration system
- New, affordable housing
- no
- not necessarily senior housing but affordable housing for everyone. probably not income based because that doesn't allow for a single parent to better themselves very easily.
- not sure
- not sure
- Obviously, the water crisis. Overpopulation of Seal and sea lions.
- One of our biggest vulnerabilities is a water shortage due to issues with the reservoirs and the water treatment plant, especially given the current drought.
- One thing that always comes up more than anything is the current drug problem Wrangell is experiencing. It just never seems like there is anything ever done about it.
- our continued spring & summer water shortage due to mismanagement (?) of maintenance.
- Our drinking water. Without clean plentiful drinking water, you have nothing in Wrangell but empty houses no one moving here. ghost town.
- Our drought issue has been the most critical in my mind as of late.
- Our power source needs the most updating. If we have a long drought then we have to use diesel fuel for generator power. Not only is that a huge expense to the people of Wrangell but the pollution that the diesel puts out is making it worse.
- Our water and electric issues.
- Our water conservation and how we continually have water shortages even in high rain years.
- Our water problem. We have to secure clean water and repair what we have to be able to contain enough in the event of a rain shortage
- Our water source is very important, and we must have that secure.
- Our water system

- Our water system
- Our water system and housing.
- Our what reservoir really needs a complete upgrade!!!!
- Our youth need trade training programs in Wrangell. Secondly, we need recycling and education to raise environmental awareness.
- Place for teens to go and hang out that is safe. Had to be a place where they want to go.
- Place for the kids to go to such as a youth and/teen center.
- Places to camp for longer periods
- Plastic recycling
- population control on sea otters, sea lions. Find alternatives for water shortage, ban plastic bag use in Wrangell.
- Potholes and safer roads
- power
- power and water
- proliferation of sea otters, British mines on our rivers
- Public school education
- Recycling
- Recycling
- Recycling and waste management.
- recycling options and delivery
- Recycling/Single Use Plastic Childcare Shortage Safe Drinking Water
- Reliable and clean water source, cheaper energy, waste management
- RESPECT
- Right now, I believe the biggest issues for Wrangell is our Water situation.
- Safe drinking water more educational opportunities and medical care
- safe drinking water/improve infrastructure
- Safe potable water
- Safe sustainable drinking water
- Safe water and secure power for the community
- Safe water, sustainable fisheries
- sandblast
- Securing water and other sources of energy, fixing leaks within the water system, increasing positive outlets for children, fixing the healthcare system, increasing community.
- Senior care
- Senior citizens and the need for home health aides and medical care for them
- Senior housing, in care home help for seniors. Getting our water problem solved !
- sex education and mental health
- Sharps containers in public bathrooms, more garbage cans around town
- Short term... clean up the messes and littering. Make Wrangell more attractive to tourists. Long term... better hospital and medical for seniors.

- Shortage of water
- Sidewalk improvement, and road improvement on Case Ave. Seen to many people including tourist tripping.
- stop drug usage
- Substance abuse Child neglect
- Substance abuse reform
- substance abuse, unstable family units, abuse of welfare system
- Sustainability of economic future with preservation of culture, people and nature
- Sustainability. Climate is changing and certain resources and infrastructure rely on things like rain, sea life, which is being impacted by climate change. Developing tourism and alternative sustainable practices are going to become vital in years to come.
- sustainable H2O
- Sustainable industry to attract and keep young people without further pigeon holing them into existing at-risk industries.
- Tackle substance abuse and related issues. Go deeper and learn about how trauma affects individuals, families, the community, and how to build resilience.
- Taking care of our natural resources like crab and salmon to help improve our fisheries economy (therefore, our fish tax benefits), our water situation, developing our downtown waterfront to a more economically friendly area, utilize the institute property for post-secondary education, elderly services, and early childhood/family learning.
- The available property for sale is in short supply.
- the cost of living is continually increasing, but the income level is not. too many people/families living at the poverty level. Affordable housing/housing needs are huge!! there is not enough places for people to live. the quality of rentals has decreased.
- The drinking water never tastes right. Sometimes it's green.
- The drought is one. Without water the canneries can't run, and the city can't provide water to the cruise ships.
- The education system needs a lot of work done, we need our schools to teach us more valuable skills and be repaired.
- The lack of housing options. It would be wonderful to see more housing developed.
- The lack of King Salmon.
- The most critical need in Wrangell Alaska is the lack of emergency medical care we have. Many times, my mother;(who's had two back surgery and in the process of finding out if she needs a third) and they often take months for her to get out and get help or shipped out.
- The most critical need is local economy. We need more money spent on the island to maintain the ability to HAVE an island. No money means no jobs, no jobs mean no people, no people. Means no community

- The most critical need would be to get more specialized Health care providers in Wrangell. Another critical need and issue is the cities buildings - schools, pools, restrooms all need updating and remodeled. They are dirty, falling apart or some other issue with them.
- The most important issue I can think of at the moment is the aging water pipes going to the homes on the airport loop road. They are old and will likely need replacing within the next few years.
- The reservoir, lack of water is vital
- The substance abuse problem
- The town was smart doing hydro. It could develop more hydro in some smaller waterways also. It all adds up.
- The unseen drug problems
- The water drought.
- The water situation. We need a more permanent solution.
- The younger generation needs to step up a volunteer to contribute to the island their grandparents created. Never is there a "Thank You" for money or for continued support. And a Thank You comes in many forms. Stepping up to help with traditional events to help them move forward. Volunteerism has gone by the wayside.
- There are many issues that need to be focused upon, such as: more drinking water, more energy into the grid (solar, wind, plasma burner) development of the institute property, development of the 6 mile mill site, more housing, a hospital that can handle surgeries as well as babies being born.
- There needs to be more jobs
- therapy for kids with drug using parents
- things for teens to do
- To get the drugs out of Wrangell and a treatment/recovery in place to get people help
- To have Council members put effort into the community concerns and help the youth and seniors and not one time visit to the seniors at the hospital.
- training for jobs for adults and then a job lined up afterwards, too
- Training for youth so they can return and work here.
- trans boundary mining
- Transboundary mining
- Trash and recycling
- Treatment facilities for drugs/alcohol
- Unstable family dynamics, unstable mental illness, and alcohol/drug abuse problems.
- Updating critical infrastructure and building for the young people in the community so they want to stay. The level of poverty in the community is really high among young families and health care, childcare, and programs support youth are critical. They have to work with work schedules to support working parents. It is so tough here to not have a program for elementary students that lasts all day in the summer. It would be great to have after school programs as well.

- Upgrade professionalism with local law enforcement. No more "good ole boys club"
Do the crime and pay the fine and do the time.
- Utilities! Water and new power poles!
 - water
 - WATER
 - Water
 - water
 - Water
 - Water
 - Water
 - WATER
 - Water ...need new water filtration system.
 - WATER & INFRASTRUCTURE
 - water & water/sewer pipe concerns
 - Water and housing.
 - Water and how to better prepare for hot summers
 - water and power
 - Water creation/storage; ocean pollution; drug use/distribution; lack of daycare.
 - Water electricity
 - Water Infrastructure
 - Water is a high priority as is affordable electricity. Education is also high on the list.
 - Water issue
 - Water plant
 - Water problem
 - Water resource new reservoir
 - water shortage
 - Water shortage could we install water storage tanks until we get a new reservoir
 - Water shortage, maintenance of buildings, need to beautify some areas
 - Water shortages & lack of recycling
 - Water situation and local dumping along with residential yard debris. Junk!
 - Water source.
 - Water supply
 - Water supply
 - water supply and health
 - Water supply, and work force - allowing more job opportunities for Wrangell
Residents to get out fishing/crabbing/etc.
 - Water system upgrade.
 - Water systems for the future
 - Water treatment

- water treatment needs to be replaced
- Water treatment upgrade
- Water treatment, and other infrastructure We don't have any long-term maintenance plans or replacement follow through on anything Wrangell owns. Revisor, Community Gym, Fire hall, City hall, we build things but don't do upkeep.
- Water treatment/transportation issues
- WATER, clean drinking water!!!
- Water, infrastructure
- water, more professional leadership in the borough
- Water, school, healthcare, housing
- Water!!
- WATER!!!!
- Water. This has been going on since I was a child. Enough!
- Water. Baby dr.
- Water. Fixes
- Water. On the island and our oceans. I feel the boat yard really needs to be looked at. Where are their waste and fuel links going? Take a look at the boat yard from the water side. It's a mess and smells
- We are a beach/island community.... Be proactive in changing how we do business, use resources, what we purchase and limit what we throw away. Get rid of/ban single use items in stores, restaurants, businesses, organizations, schools, etc. (Why do we need a fat plastic straw to drink from a glass???) Clean up near and far beaches, bottoms of harbors, etc. Take care of the ocean and the treasures we have here.
- We don't have enough available housing or permanent specialty doctors.
- we need a new water plant
- We need more housing and a better water plant that is meant to work in our conditions unlike our current one
- We need more housing options... rent and own.
- We need more mental health staff and drug abuse programs.
- We need much more reliable sources of water and power than just hoping that it rains enough. We should invest in new energy sources, if possible.
- We need recycling resources
- We need to be the best version of ourselves so that we continue to attract tourists, families, and business people.
- We need to create a sustainable income for the Tribe not based on grants. We also need to get our youth and young adults more involved.
- We need to get the children away from drugs and get them doing constructive things. I see kids at young ages smoking marijuana and other things. We need to give them an outlet especially for summer time to keep them busy and drug free.
- We need to think creatively around self-sustainability. Grow our local economy from within. Find ways to grow our own foods while responsibly harvesting indigenous plants. Holistically encourage and support those who are coming back from drug and

alcohol rehabilitation or jail, by offering sober living options and job skills support, in addition to mental health services. Grow mentorship programs with the school to help cultivate the workforce from the ground up. Bring initiatives that educate the community on long-term environmental impacts of some decisions like onetime plastic use, mining, and illegal dumping. Let's have real conversations about systemic sustainability. Tourism is economy dependent, which is not sustainable or predictable. Yes, let's grow that portion of our community, but let's not put all our eggs in that basket. Work first on improving the quality of life for the locals and the benefits will flow over to those who just visit our town and leave their money.

- We want to be able to give birth here again and more homes/ apartments for locals.
- When the town gets smaller or city government should go accordingly, and not drive up taxes.
- Wrangell is in need of more childcare places.
- Wrangell needs to focus on economic development.
- Year-round industry for youth to have when they graduate...college, prison, logging, etc....more stable water supply.

Is there anything else you want to let the Wrangell Cooperative Association know on any topic?

- 1. What I would really like to see is someone offering boating/fishing lessons. I've always wanted to boat, and only know the basics of fishing. I'd definitely be interested in classes in those areas. 2. I'd also be interested in a Tlingit language class. I know there are classes already, but are non-natives allowed to participate?
- A co-op funding for business startups, location scouting, workforce development, and grants for small business startups in the community is essential. People want to live here but jobs are scarce so creating businesses and jobs make sense. BUT rent is high and business rental locations are hard to find. People want the resources that help them start small businesses.
- A recycling program like the ones they have down south including compostable.
- ALL first responders should get new vehicles. It is concerning that not all of them have new vehicles. If we have an emergency and someone can't get to us fast enough because of their old vehicle, that is senseless. Several of them are driving around in older vehicles and it is noticeable, it does not look good or make anyone feel secure that when they need help, they would be there in a timely manner.
- Be sure to work with the city. Remember that the majority are not native and don't necessarily want the community's priorities decided by the minority.
- Better education system
- Change the Search rule about letting small communities have baby deliveries.
- childcare
- Clean up or get rid of derelict buildings downtown and enroute to Shakes Island. This is what the tourists will see.
- Continue to help our community & jobs for those that need jobs then more of a chance to be employed as well. Thank you, WCA
- Do you help tribal members with burial assistance?
- Doing great job
- Don't focus on tourism as much. Keep the cruise ships small and infrequent. Many south east communities allow large cruise ships to visit, and it detracts from the uniqueness of the areas and makes the town not as enjoyable.
- Even though I am not An Alaska Native, it would be wonderful to inspire the youth to take and carry on their traditions of their elders by educational events and teachings.

- expansion of tourism will bring more people to Wrangell, but will it bring more income?
- Fund JOM better our youth need it!
- Get involved in tourism
- Get rid of all plastic
- Have more training for help with seniors
- Have our own monitors to regulate drugs
- Help all citizens of Wrangell
- Help the local fisherman thrive again, they are the people that help make this town great!
- Hire local for any projects.
- Hope to see WCA continue to expand recreational site support and expand winter recreational opportunities for youth and families
- How is our community going to handle the increase of meth and heroin usage and trafficking in our community?
- How to get people exercising more
- Hydro power needs to be managed better
- I am 30% Apache
- I appreciate the work that past and present board members have put in. I think we should stop talking and start doing though!
- I disagree with all the new rules and regulations that the tribe has implemented
- I don't think so. Thank you for doing this.
- I don't think so
- I have so many thoughts racing through my mind, but I would just like to say thank you for all that you are doing to help to better this community, both native and white. thank you!!
- I love my community! I think it's great just as it is. We have a few issues here and there, but for the most part I don't think we need to change much at the moment.
- I really would love to see more options for WCA to partner with SEARHC for more on the job trainings with kids who are in high school who may not want to go to college but stay here and work and once graduates can start working right away.
- I support what SEARHC and WCA has been working on in Wrangell and the open mindedness to change and develop growth! We really need more available property to be able to build and expand at a cost that is reasonable and doable for people.
- I think I've said enough for now. Thank you for the survey.
- I think the drug problem on Wrangell needs addressing, and it would be nice to start the community garden back up.
- I think these are all good things to focus on.
- I think WCA's trajectory is better than it has ever been. They should keep working towards developing great leadership skills for the WCA organization and community. As the internal workings of the organization improves, so will the programs it supports and produces.

- I think we need to start recycling in our homes. I spent 2 months in Germany, and it is REALLY easy to do. The transition wouldn't be hard at all. We would just have to educate people.
- I think what they do in a Wrangell is great!
- I want use of community exercise equipment made more available to seniors on limited incomes. Currently they charge \$3.00 per use of equipment. All equipment at the high school. That high school charge keeps me from participation, I know the need to cover insurance for the participants. I think the high charge is justified for the dangerous equipment like the Nordic ski, or the walking exercise machines.
- I would like a or another WCA open house with new building
- I would like to see jom back on for Wrangell youth!
- I would like to see shakes island developed with more interpretive resources for visitors. The long house is mostly always locked and there agree no outdoor interpretive materials for visitors to learn about the totems, long house, Tlingit, or even the island itself.
- I'd love to see an expansion of early intervention programs or general education assistance for kids.
- I'm not judging or assuming...there is a general pattern of gossiping and backbiting in American society. Avoid it at all cost. Stand together. Work in harmony, no matter what is agreed upon as priorities in terms of projects to undertake.
- I'm really excited to see community leaders joining together and sharing ideas, resources and love for this amazing town of Wrangell.
- Important to work on cleaning up trash, junk on private properties, abandoned cars, etc.
- It would be nice to have classes that teach the Tlingit language and history
- It's time to get rural mail delivery and an address.
- Job opportunities in Wrangell all year long needs to be in the forefront.
- Keep up on the recycling
- Keep up the great work on all of the amazing projects that have contributed greatly to the betterment of our community. Your work is appreciated and incredible.
- Keep up the great work!
- Length of time it takes to get permits to improve or get started on developing a piece of property and not enough property to purchase in Wrangell.
- Let's not turn this into a seasonal tourist trap with closed shops in the winter. Make it a destination for activities and adventures. Don't put any more pressure on Anan or there won't be bears to watch; on local fish populations; nor diminish why people live here. Take care of the infrastructure. Continue to help getting a recycle/re-use program.
- Listen to the elders
- Littering

- Look to the future more. Maintain Wrangell's connection to the past but be a driving force for innovative thinking to help Wrangell thrive without further damage to our resources and what makes us unique
- More cultural awareness, classes, groups, dance groups, cooking classes for traditional foods, anything to bring more people towards their native heritage
- More drug awareness and family strengthening workshops or programs.
- More housing
- More native interaction with tourism
- more options
- Need lower freight rates and better ferry service.
- Need more signage around town to better attract tourism.
- Need to look at sustainability of our fishing resources. I.e hatcheries and such
- Need to work together with internal members as well as the public to do more than create planning documents. Is important but follow through. Lots of talk, little positive tangible outcomes.
- This was better than a phone survey
- no bullying, bring healing spirit
- No more polluting huge cruise ships
- Our police need help getting the drugs out of town. The children know who they are. Do the police?
- parks and recreation for kids
- People shouldn't have to leave their homes/town to get the proper help they need. Wrangell needs to focus more on making Wrangell a more efficient effective role in one's life. Citizens shouldn't have to leave their town for every health issue because Wrangell neglects caring for those issues. Wrangell apparently has enough money to fix roads that aren't a priority to fix (fix the low road, those pot holes are bad) and to constantly build new clinics and such, is the new hospital going to be able to deliver babies? Because that's a huge thing that many Wrangell parents would appreciate. Wrangell also needs to push to be more proactive in vaccinating children. So many families on this island are choosing not to vaccinate and with everyone having to leave for health and shopping etc., those families are going to bring the sicknesses here. Wrangell will soon be full of measles and sick children and that's dangerous for such a small community.
- Please encourage the Governor to fund the Ak Marine Highway system to support local and tourist activities.
- Public transport is a big one for me, we need to have something like the senior bus but for all residents...too many people are driving to work and could commute, and it would make a huge positive impact for residents who don't have the Choice and must walk in all weather, or hope the cab company is running... \$8 each way can add up over a 5 day work week
- Recycling, rehabilitations, and preservation programs are also very much needed in Wrangell

- Recycling!
- residential housing is also an important component of economic development in order to avoid dramatic increases in housing costs which would further restrict economic development
- Right now, most tourists walk through town and stop in local stores. If there is a park it bypasses the heart of the town and is less of a chance for merchants to have customers. A visible sign pointing towards the museum would give more directions to the tourists.
- Sea otter and whale populations are growing rapidly. Wolf and elk population are also very high on the surrounding islands.
- Senior housing Need for more Local rentals.
- Someone should put a sign on the 10mi water pipe that is not certified as potable.
- START COLLEGES HERE!
- Stop associating or partnering with Tlingit and Haida Regional Housing Authority.
- Stop giving our water to cruise ships, being in a drought seems to be occurring more and more.
- Subsistence classes, gather, and process.
- Subsistence hunt/fish may need some limitations on the proxy's
- Thank you for asking
- Thank you for doing this! I look forward to further meetings with the results from this and plans for implementing/action plans
- Thank you for letting me be a part of this survey.
- Thank you for providing Wrangell a platform to advocate for themselves!
- Thank you for sending these and helping with Wrangell's needs!
- Thank you for stepping up and increasing your role as "keepers" for community health and local resources.
- Thank you for taking an interest in this wonderful town.
- Thank you for the steps you are taking to encourage participation from all Wrangell residents.
- Thank you for your service to the community.
- Thanks for your concerns
- The need for teen activities
- The prices of the necessity's needed to live are getting too high for the wages that are not getting any higher.
- The sea otter issue needs to be addressed soon so we don't get to the point where it would take years to rebound from their over harvesting of crab and other shellfish.
- The sea lions are taking over
- The Wrangell Cooperative Association does a lot of great things for this community and it's appreciated.
- There is a large group of anti-vaccination people in town. I strongly believe that there should be advertisements, public discussions, etc. explaining the importance of vaccinating.

- There needs to be a community meeting about how to get the drug use down. Seeing something and saying something isn't working. The community needs to do more
- there's an artesian well , out where the Wrangell Institute used to be, its capped off / Try to get it hooked back up again. There would plenty of water for Wrangell. Ask people like Jon Keso who worked for the State.
- to be more involved in doing the work for which it passes.
- Transportation dept. should be focused on upgrading/maintaining paved roads in town
- Utilize the carving shed. What was it built? It certainly doesn't function as a cultural center.
- Water for Wrangell, I know there's a water shortage and there are a lot more ways to generate water here than just the same all way we have been doing it. Water can be generated by Wells. The other thing that may be considered is running a pipeline up to Stikine river where you have unlimited water. If you're only looking for water, it wouldn't take much to get all you need from up there. Let gravity deliver it. An 8-inch line at very low pressure will give her about 1000 gallons a minute. That's 144,000 per day. Get the pressure higher and much more.
- Water supply--without it you have nothing.
- WCA and the CBW should work together to solve Wrangell's problems
- WCA needs to do a better job of taking care of their own facilities and grounds. Carving shed, etc. hasn't had the wood siding refinished since it's construction, lack of vegetative mtc (cutting back weed, brush, alders, etc. Doesn't show a concern or interest in appearance, after spending huge amounts of money on recent capital improvements.
- WCA should be more knowledgeable on this topic, but there seems to be no interest
- WCA should use tourism to generate income for the tribe and at the same time promote education of the tribe's history and culture.
- WCA should consider bottling water and go gov't to gov't. There used to be a grant for \$250,000 that went untouched. They should also get the fish going in return to Pats Creek. They don't have to go up and spawn. Juneau has fish big kings go to Auke Bay. For tourism, charter business and for locals. And doesn't spawn they replant. WCA should buy the machine. Teach kids to run it. And get it going. Everything is already there. And it's been there. Why don't you start?
- We have very few industries for income here. We need more awareness of how money from fishing and tourism benefits everyone in the community even if a person is not directly employed or working in those industries, they are what fuels our economy. Fishermen spend money in town on services and products with local businesses who in turn spend the money earned in more products and services. Same with Visitor industry, businesses that sell tours and gifts and products to the visitors intern spend the money they have earned with other businesses in town. Without all that spending from the tourism in the fishing industries the local businesses would

have a hard time surviving. Oh, and the current construction boom with temp workers in town and using locals on projects. All good and we all benefit. But many people do not understand how an economy works and may think "oh I get nothing from that industry I don't care if they are fruitful" yet prices could be higher all over town with less purchasing in town. WE ALL BENEFIT FROM HEALTHY BALANCED INDUSTRY!!! Locals need to be educated on this subject. Imho .

- We love Wrangell and want to invest our time and efforts toward the community's long-term benevolence.
- We must put a plan in place for our water supply, NOW!
- We need an ANB Hall back, a new meeting hall back, since there's no longer the SNO Building.
- We should be looking into marine-generated electricity via tidal-generation
- We should talk to silver bay about opening a cannery here
- What about wood, I thought there was going to be chopped wood services or a place where people could get wood
- What does WCA do I don't really know
- when a grant is received to do housing repairs it would be nice if they would actually get done! Better follow-up
- Work on drug problems
- Working on developing our fishing and tourism culture so that Wrangell can run more smoothly with both happening at the same time
- Would like to see removal of bushes along city streets. Less junk and old cars in unused lots.
- would love more opportunities to recycle
- Yes, concerned about our water out front of town and around the harbors. Pollution from cruise ships and tourist boat with waste from their vessels. After Report from Ketchikan, I'd like to see our waters tested too.
- Yes. Be more open to your members. Have member service at the forefront of all decisions. Offer things that your members need and help them through it. Don't parcel off grants to organizations that can't manage them. Please find a way to improve member relations and communications. Facebook is lame and not the only way to get info out. Plus, waiting until the last minute or just a couple days before a meeting to post about it is really inconvenient for those who have work/life schedules they can't adjust last minute. More information to members is a good thing. Transparency builds trust. It feels like everything is done in secret and nothing is inviting. Additionally, I have no faith in the security and filing systems at WCA and therefore don't trust it with personal information. How is WCA protecting my private information? If I can't trust the information is kept securely, then how can I feel good about filing our forms for WCA's grants and expansion?
- You're doing a GREAT JOB! It is hard to turn a large ship! Your making headway just keep turning slowly so you don't lose anyone. Keep in mind you are where you are because of the people who have gone before you. Keep learning and listening to

your elders EVEN if you don't agree with them. I did not say you have to do what they say. 😊 but listening and learning from them is wonderful. They have the years of experience. That is something that cannot be bought.

All Other Comments

How important are the following health care related needs in Wrangell? Other

- Being able to stay here to have a baby!!!
- culture camp
- Dental care needs to be improved. I know man people who leave town for dental because of bad experiences.
- Dermatologist. even a traveling one would be good
- Dermatologists and cardiologist visits
- Develop Senior exercise programs.
- Domestic violence help for men, woman & children
- Doctors able to set a bone
- Easy access to local drug and alcohol treatment programs, NAMI program, Restorative Justice program, Bystander classes for our teens, Coaches training such as Coaching Boys to be Men, Youth Court, Arts programs that include sewing, quilting, visual arts and drama, Cooperative extension programs such as gardening, canning, etc., ACES training for Childcare providers
- Have a means to forward tests taken in Wrangell to Sitka and/or Anchorage to cut costs of duplicity.
- High level - More training in becoming trauma-informed, agency-wide
- High need for assisted Living!
- Increase preschool and childcare opportunities
- Just general health. Two of three doctors are not taking new patients.
- Local eye care should also be a priority
- MD specialists travel to Wrangell
- more dental care choices; more choices for colonoscopy procedures
- More frequent visits from physician specialists e.g. Orthopedic, OBGYN, etc.
- New dentist, one that actually knows what they're doing would be amazing. I refuse to see the local dentist
- Opportunities for young people to job shadow
- Parenting/Family Skills Classes/Opportunities for support
- Pediatric home health services and a DME provider
- PLEASE MORE MENTAL HEALTH CARE
- Provide parenting classes

- Public transportation
- Regarding: "more mental healthcare service" - quality assurance office open to the public - to regularly liaison quality concerns. Regarding: "
- Resource Directories and/or Referral to Services Dept.
- Some of answers are based because I think Wrangell needs it yet does not affect me directly.
- suicide prevention services
- There is a huge need for more recreation opportunities for youth
- totem pole restoration and jobs please
- totem pole restoration and jobs please!
- Toxin free environment - water and soil, parks, harbors. Quality child care.
- Training for holistic healing from our earth
- Treatment for depression
- Urgent Care.
- Veterans services
- Would be nice to have daycare or short stay care for seniors that are cared for by families. It would give them a resource to use when they need a few hours to do other things, shopping, their personal doctor visits, go to the movies....

How important are the following health care workforce related needs in Wrangell? Other

- A day care at the new hospital would be amazing!
- allow residents entrepreneurship in Wrangell
- Already in place just not at HS level
- alternative medicines, traditional remedies
- Develop a strong volunteer program
- Drug awareness programs and prevention strategies for Wrangell
- Flexible work schedules I think are high, 12-hour shifts make terrible care for the patients. the staff is tired more mistakes can and are made and tempers are short..., 4x9 would get the same as 3x12 hours and everyone would be rested.
- help for teeth & glasses
- High level - SART training for hospital staff
- I believe that there is a HUGE need for childcare in Wrangell. Not just for healthcare professionals, but for everyone.
- I think more childcare slots need to be made available for all the community, not just health care workers. There are such limited resources available for all ages of children and they don't coincide with parents work schedules.
- if there's a demand for childcare for health care workers. are we talking about hospital & clinic? then maybe start a daycare at the new building.
- Improve childcare for the child with low teacher - student ratio. Don't increase child care slots without increasing quality providers and teachers.
- Increase childcare and housing options for ALL community members
- increased affordable homes for all, not just health employees
- more specialists on a regular basis; medical massage therapy/integrated chiropractic practice
- Some of answers are based because I think Wrangell needs it yet does not affect me directly.
- We need to get fish and we have to take time off to go get fish. That sucks.

How important are the following economic development initiatives in Wrangell? Other

- All of these would be beneficial, Old mill site could be any viable business, school location there would be parking, housing (it has a great view), Water park (mini wild waves :))
- Alternative marine-powered energy (tidal or wave generation)
- ANSEP school
- build new water dam--enlarge Tyee lake
- Capitalizing on tourism for Wrangell like other southwest communities should be a priority
- Clean & respectful tourism is great. Ships that pollute and threaten marine life have no place. A Holland America ship ran over a pod of bubble feeding humpback whales last week. Carnival Cruises admitted to dumping gray water in Glacier Bay last month. We don't need tourism dollars at the expense of the health and safety of our waters and air quality.
- develop small specialized woodworking industry using local wood
- Do not grow tourism at the loss of the qualities of life that currently exist in this community that are already being affected, ie. crowding of sport fishing and displacement of local people by tourists and part-time residents, who truly are visitors who want to exploit our rich resources and quality of life, but who do not live here year-round, pay minimal property and sales taxes, etc.
- Do something with the Institute & Mill properties--this has been dragging on for years!
- Educate the tourists that come here about Wrangell
- Encourage food agriculture and gardening
- Ensure there are niche areas fulfilled: e.g. Car body work, bike shop, etc.
- Focus on the environment...industries keep taking from, and not giving back nor taking care of the environment! Let's not develop businesses that harvest seaweed, etc. from the environment...it all already has a purpose. Cultivate it for commercial purposes.
- get a new water source or water storage
- Grow our own food
- Hard to grow and infrastructure with keeping the close-knit community. I don't want Wrangell like Ketchikan!!!
- Housing and with that medical.
- I feel the more we can do as a community to continue to prosper will allow us to grow. I know our community will never be what it was at the high of the logging industry, but we are dying and need to do whatever we can to develop us and grow for the survival of future generations.
- I would love to see the Institute Property turned into a S.E. Vo-tech school!

- I tried to get the IRA to bottle water and sell gov't to gov't. Pay the city for water, put money into town. You could sell to armed forces, provide water for disasters for which there is a grant. You could start small and if you got into the world market, it could employ as many people as both mills did or more. There are endless opportunities!
- If they connect the road, connect to power source too and get rid of the need for generator power!
- Institute Property become educational branch of UAS, with assisted senior services living and a preschool/child care facility. Multi-generational, cultural center of learning and living.
- It would be very nice to move freight to another location and out of downtown. It would also be nice to not have tourist ships on generator for the entire day. If ships are at City Dock, they should be on shore power. It's annoying to listen to a generator for 8 hours.
- job skills training centers, drug and alcohol safety net programs, like sober living homes, etc.
- Keep Wrangell as is, stop trying to destroy one of the last gems in southeast.....
- long term investment sustainability. Water - Japan has osmosis machine to de-salinate & cleanse use of oceanic water/large commercial & individual vessel type
- More housing options for families that are trying to move here. There is not enough housing for people. We need more activities for our youth. (skate park, playground etc.)
- Need to diversify and expand Wrangell's economy. This includes support to timber processing. Include this along with other industries at the old mill site.
- Other possibilities still exist for small scale timber development (because you can still get access to one log at a time). Woodworking, either through boat repairs, home repairs, construction, or fine finished wood products (guitars, tables, totems, etc.) are still possibilities to develop. Local totems and smaller wood souvenirs would also merge well with tourism.
- Our city bill on garbage, sewer and water is too expensive!
- Our city bill on garbage, sewer and water is too expensive!
- Overhaul the sales tax structure to develop more revenue from the boat yard and tourists and reduce the burden on Wrangell citizens which will benefit our elders and the poor.
- please more housing lots of families moving back home to their native roots young families and no housing available.
- Provide more opportunities for growth besides maritime trades.
- Public transport
- Road pursued is high priority!
- Salmon restoration, creek rehabilitation
- Small 1 & 2 & 3 bedroom houses (affordable)!!!!

- The city needs to put more property out for people to develop and build on. We are in a housing crisis.
- The pipes underneath the loop road will need replacing soon as they're reaching the end of their lifespan.
- Use the old hospital as a training facility for health-related issues and substance abuse treatment related issues
- Water and electric security
- Water is an issue. We need to develop other sources of water collection for public use that does not require the purification process.
- Water is our #1 problem!!!
- We also need more entertainment venues for the locals, besides just the local bars or going to see a movie at the Nolan Center.
- We need to diversify, not double down on existing industry. More industries means more opportunities if other industry lags or stalls. We need to develop new innovative options locally
- What other superlatives does Wrangell have other than Shake Island because whoever is developing Wrangell isn't doing their job and has no insight on how to grow this community.
- Wrangell is not in the FEMA program & that is not addressed but affects Veterans receiving home loans in Wrangell. Not being in the FEMA program also probably affects business from looking at Wrangell as well. FEMA provides low cost subsidized insurance for Homeowners. Small business startup support at tribal and city levels. Training and advising for starting small businesses.

How important are the following tourism related needs in Wrangell? Other

- 1000 person plus cruise ships are too large for Wrangell. Keep Wrangell unique with the smaller ships. incorporate the historic fort service boat into the Nolan Maritime museum. This will be a tourist draw.
- As a tribe we should be the ONLY ones that give tours on Shakes Island. We could develop a walking tour, bus or canoe tour.
- Botanical Gardens with a native plant exhibit and plants from all over the State. Also open the wells back up and offer a place for tourists and locals to fill up on spring feed water for drinking
- Carving shed facility is not nearly being used to its potential or how it should be used for visitors as well as residents.
- Develop capacity/empower more of our population to be able to impart native ways of knowing
- Do not want Wrangell to turn into Ketchikan, too much tourism!
- Don't want big tour ships
- Economic growth is critical. Our youth is not returning because there is nothing to support their return in terms of financial stability. Wrangell is a dying community with an aging demographic. We must find avenues that allow our youth to return with a secure financial future. I'm not saying explore all the listed ventures but find some economically viable options and pursue!
- Focus on limiting number of ships on one day.
- Freight rates would go up even more than they are if they had to truck everybody's freight from 6 mile to town. The barge needs to stay where it is. Tourists don't like the looks...tough cookie go somewhere else
- How to pay for all this? Parks? What about fixing water, and schools put the money there. Increase charter? What about fishing, no King salmon? Idk
- I absolutely love all these wonderful ideas, and truly hope most to all come to fruition.
- I think our tourism industry is one of our biggest assets at this time. Any way we can grow our tourism industry is a good thing in my opinion.
- I understand that some people need tourists economically, but do not want to see Wrangell turned into Ketchikan.
- I understand the economic drive for more tourists but don't want to see any increase unless there is an infrastructure to handle them, so they aren't wandering aimlessly around town
- I want a working waterfront like it is now, not relocated and turned into a tourist carnival. Some tourism is great, but I don't live in Ketchikan or Sitka for that reason.
- I'd like to see more electronically based tourist guide experiences developed. This would be an option for guided, yet unstructured visitors tour of Wrangell at their own pace.

- If native centers wish to build programming it is up to them to build it. I don't believe the City should have involvement in those activities.
- If the majority of freight is distributed to downtown businesses, then moving the dock to the old mill site does not make sense. It would mean more traffic and wear and tear on our only main road.
- It's nice to offer these options for tourists, but what about the locals? A culture camp for local kids is a much higher priority than one for tourist kids - which there aren't many. Most tourists are adults. We will lose all the good things about Wrangell with increased ships and/or larger ships. This is not an area of need.
- In this town, Brian Ashton owns and operates a factory and makes fish incubators. This is more efficient than a hatchery. You should go look at his operation. He has people asking about it from other towns in the US and other countries like Russia. The inventor lives right in Wrangell. At one time there was money sitting right here in Wrangell from BIA past and approved, but nothing happened as usual. WCA fought and argued did nothing and the money was moved to Fairbanks...to 40+ recognized tribes. As soon as they received the go-ahead & money they went to work immediately. They are batting 100 totally organized. Have a good track record to prove it. And to this day going full bore. And Wrangell let it slip right through its fingers. The only way WCA will ever get going is to put feelings and fighting aside. Concentrate on the product. Come together with one social force. And start producing. The rest of the world is turning. And that includes the City it would be nice to see good progress with the young educated people we have in Wrangell. It could easily be done and done right.
- Keep tour ships out of Wrangell and Alaska
- Make the carving shed a place where tourists/visitors see carvers and other art see how it's made.
- More public restrooms
- More self-propelled options such as a bike tour, more sea kayaking/canoeing
- No fish out there so no need for the charters
- On tourism, as with guests we invite into our homes, Wrangell should consider what type of people to invite to Wrangell. Eco Tourism works. Disrespectful companies who pollute and/or threaten marine life should not be allowed to operate anywhere.
- Please don't make us like Ketchikan and Skagway
- residents first
- restore old totem poles would be nice
- sidewalk from city dock to ferry terminal
- Sorry, I just don't like the tourism taking over our community. It changes the hometown feel, not the Wrangell I grew up in.
- Stop trying to turn us in to Ketchikan n Juneau
- The cost of boat tours is really high. Can 'special' days for locals be offered?
- The cultural interaction with tourist is great. But what I have seen is they need to break it up into smaller slots. They have limited time so if the town activities were

shorter, they could get more in. You also have to have dedicated people to keep it viable. The story telling for example is done only by the elders, have the kids do a small one incorporate them into it more so when they grow up, they will carry on.

- We do not need more fishing expectation right now...we have no king salmon so now we are going after silvers and halibut. They are subsistence fish...it is challenging to get halibut for local consumption....take, take, take. Sell experiences, not local commodities.
- We have plenty of tourism here I don't think we need to increase the tourism rates.
- We need less cruise ships that are selling our tours onboard, vs. visitors private booking. Too many dollars going to ships selling our services at doubled or more prices. . Wrangell should be focused on our chamber of commerce and visitor bureaus working directly with tourists visiting as best as they can. Highlight supporting small businesses.
- worried about all the waste dumping in our waters
- Wrangell needs to bring more in order to get more.

How important is it to focus on the following environmentally related priorities/concerns in Wrangell?

Other

- All of these things concern me. I'm not as worried about the outdoor air pollution here... But I know that everyone contributes to the overall pollution of our earth.
- As long as it's for all the residents in Wrangell
- Better enforcement of subsistence limits
- Biomass disposal areas needed. Electrical devices disposal every year
- Bring back control on sea otters, seals and sea lions
- build a plant at Bradfield.
- Clean drinking water source for residents that aren't on the city water system. Also, safe sewage disposal for residents that aren't on the city sewer.
- Climate change is real...what are we doing as a community to help to curb and turnaround the affects? Why aren't we expanding our reservoir, making it deeper, larger? The rain forest is drying up, the weather is changing...be pro-active!
- Dredge our reservoirs n put in new water plant
- Education about packaging reuse and recycling AND a recycling program for plastics, glass and metals. Retailers providing products in bulk where containers may be reused many times (e.g. liquid or powder laundry detergent sold by weight into customer provided containers)
- healthy environment/warrior return
- How to prioritize these?
- I don't want to see Wrangell turned into a liberal, "environmental conscious" dumb like California. Saving the environment by micro managing resident by making laws to save the environment etc., does nothing but add on more taxes and burden people. California is a great example of complete failure. People move here and live here because they don't want to be micro managed by the government/city.
- I think we are in the education state regarding wood smoke, but we should be recycling. I hate seeing the crap throw out on roads 😞 Regarding the drought. We need to educate why it is happening and how we can help. I think the Feds and State scree is in subsistence. We need to take back our rights regarding animals, fish and berries.
- Lack of support for an all-volunteer animal shelter. St. Frances will only be viable for another 5-10 years.
- Need a place to dump branches and bushes, and grass clippings.
- need to improve recycling!
- Need to let the state of Alaska issue permits to shoot Sea otter.
- Now we're talking! Let's improve our community in ways that will encourage its sustainability and continued prosperity!

- Our impact on climate change. Reducing reliance on diesel power generation. More efficient heat sources in public buildings.
- population control (sea otters sea lions). Ban on plastic bags
- Sea otter/Sea Lion populations impacting important resources like crab and salmon in our area need attention.
- Some of the problem is the city charges for everything. Some people don't have the money, so the city help create the problem. Telling people what they can do on private property can lead to a bigger problem. Dump free day helps. I know at Kake AK, they told them what to do and they said no. We don't have the money. They have a free dump.
- The City needs to think smaller not larger. Stop the big city thinking. We have 2000 people on this island who live together very well. People from other areas who move to Wrangell need to leave their ideas in their past and live on our island. If you want things to be like where you came from then go back to where you came from. Our island has a huge population of seniors and a small percentage of younger people. 314 children in school. Provide services for the people you have not for the people you think you want. How about getting people out to volunteer to do things the older population used to take care of instead of looking out for only their own interests.
- The community needs more emphasis on managing hazardous materials. Recent issues include the Byford junkyard and attempts to create a toxic waste dump at Pats Lake, the contaminated sand blast media being dumped at the city boatyard bulkhead, the violations of water quality from Trident Seafoods dumping fish waste, the multiple Alaska Mental Health Trust contaminated sites in Wrangell.
- these are all very important topics and too difficult to put a significant concern next to it.
- Too many things on one line. Hard to comment
- We desperately need more recycling!
- Why do we ship our garbage south? I've been to Phoenix , AZ. They go a little ways out of town dig a big hole. And proceed to fill it with garbage and recyclables. We have valleys out the road that won't even drain into the ocean. You say it can't be done. Then why are they doing it? One time I was working for Shorty Thomsgard, and he took a ½ barge of contaminated rock to Seattle. Then it went on a train to Oregon. Then they rain through a furnace. All I seen on the rock was diesel. They were going to have bring the ground back, but they didn't. What if Wrangell had a furnace and did contaminated rock and garbage out at the old mill site? From all over SE.
- We want industry we need to look at their waste and how to resolve that before generating that waste look at the boat yard. Great business for Wrangell but no plans were made for the waste generated. Indoor pollution is self-induced maybe educate to help those affected take steps to avoid.